

# CHILLUM RD. AT KNOLLBROOK DR. INTERSECTION CIP PROJECT

---



prince  
George's  
county

MARYLAND

Angela D. Alsobrooks  
*County Executive*



Terry L. Bellamy  
*DPW&T Director*



# PROJECT LIMITS



DEPARTMENT OF PUBLIC WORKS AND TRANSPORTATION  
PRINCE GEORGE'S COUNTY, MARYLAND

## CHILLUM ROAD AT KNOLLBROOK DRIVE INTERSECTION IMPROVEMENTS

CONTRACT NO.  
SHA NO.  
FHWA NO.



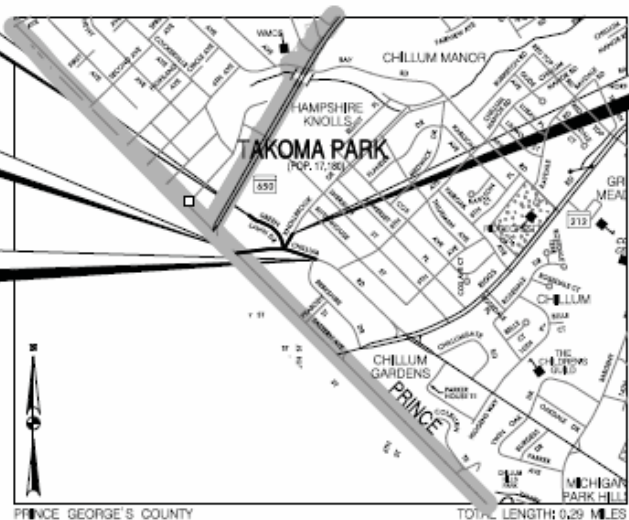
OWNER'S / DEVELOPER'S /  
APPLICANT INFORMATION

**NAME:** PRINCE GEORGE'S COUNTY GOVERNMENT  
DEPARTMENT OF PUBLIC WORKS AND  
TRANSPORTATION

**ADDRESS:** NOLEWOOD CENTER 3  
3400 PEPPERCORN PLACE, SUITE 310  
LARGO, MD 20774

**REPRESENTATIVE:** KATE MAZZARA, ASSOCIATE DIRECTOR  
OFFICE OF ENGG. & PROJECT MANAGEMENT  
2001 BR-6642

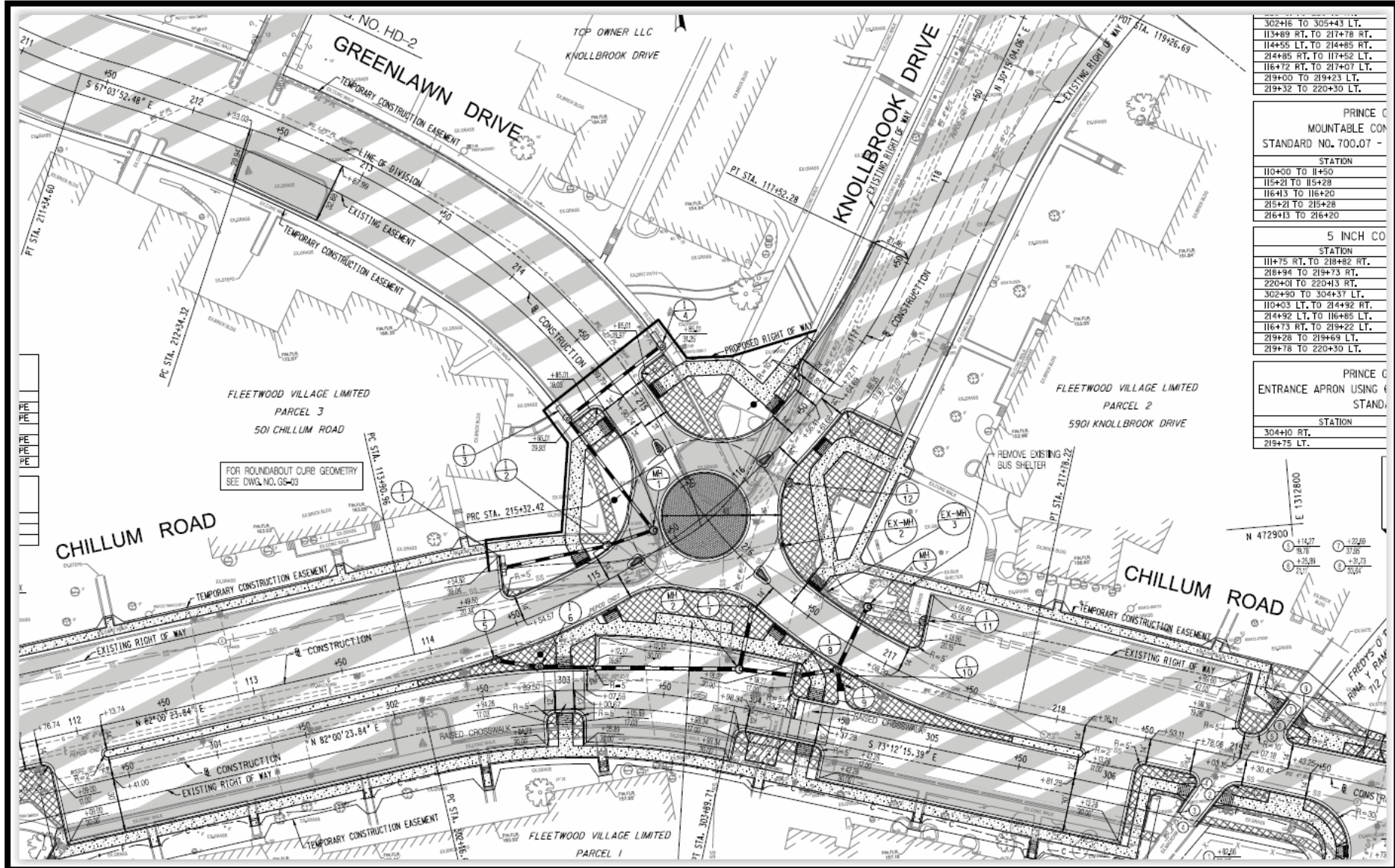
**PHONE:**



LOCATION MAP  
SCALE: 1" = 1,000'



# SAMPLE PLAN SHEET



302+16 TO 305+43 LT.
113+89 RT. TO 217+78 RT.
114+55 LT. TO 214+85 RT.
214+85 RT. TO 117+52 LT.
116+72 RT. TO 217+07 LT.
219+00 TO 219+23 LT.
219+32 TO 220+30 LT.

PRINCE GEORGES COUNTY MOUNTABLE COM STANDARD NO. 700.07 -	
STATION	
110+00 TO 11+50	
115+21 TO 115+28	
115+43 TO 116+20	
215+21 TO 215+28	
216+13 TO 216+20	

5 INCH CO STATION	
114+75 RT. TO 218+82 RT.	
218+94 TO 219+73 RT.	
220+01 TO 220+13 RT.	
302+90 TO 304+37 LT.	
110+03 LT. TO 214+92 RT.	
214+92 LT. TO 116+85 LT.	
116+73 RT. TO 219+22 LT.	
219+28 TO 219+69 LT.	
219+78 TO 220+30 LT.	

PRINCE GEORGES COUNTY ENTRANCE APRON USING 6 STAND.	
STATION	
304+10 RT.	
219+75 LT.	

N 472900 E 1312800	
① +11.07	⑦ +22.69
② +8.78	⑧ +17.28
③ +25.29	⑨ +32.73
④ +21.1	⑩ +30.84

## POINTS OF CONTACTS DURING DESIGN:

Erv Beckert, P.E.

Chief, Highway and Bridge Design Division

Mobile: 240.508.9610

Email: [ETBeckert@co.pg.md.us](mailto:ETBeckert@co.pg.md.us)

Noah Donoghue

Design Project Manager

Phone: 301-883-5641

Email: [NDonoghue@co.pg.md.us](mailto:NDonoghue@co.pg.md.us)

## POINT OF CONTACT DURING CONSTRUCTION:

Dwight Joseph

Chief, Construction Division

Direct: 301. 883. 5633

Email: [djoseph@co.pg.md.us](mailto:djoseph@co.pg.md.us)