



prince georges county



# HARRY S. TRUMAN DRIVE, GREEN-COMPLETE STREETS CIP PROJECT FROM WHITE HOUSE ROAD TO LOTTSFORD ROAD

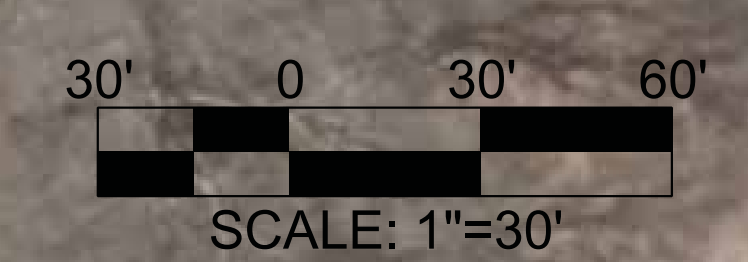
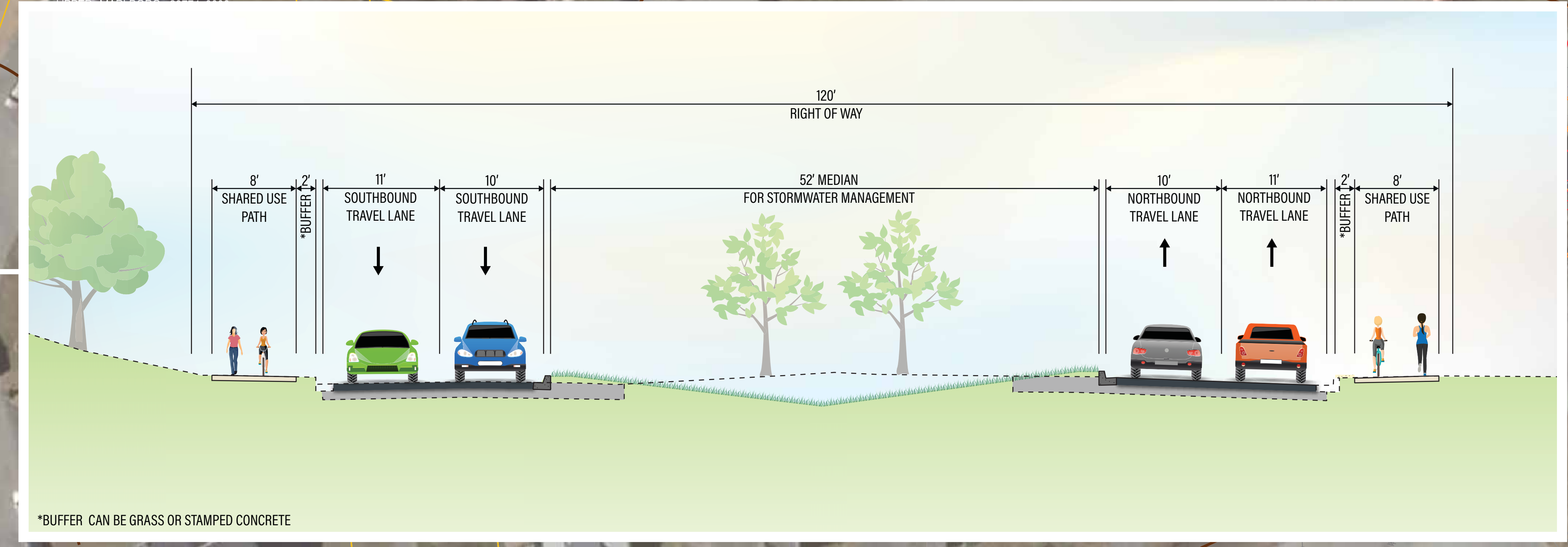
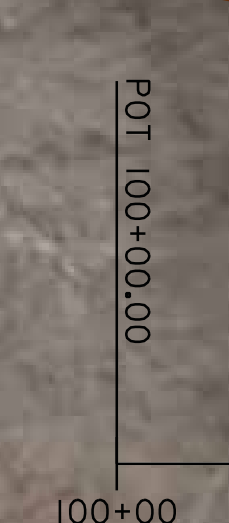
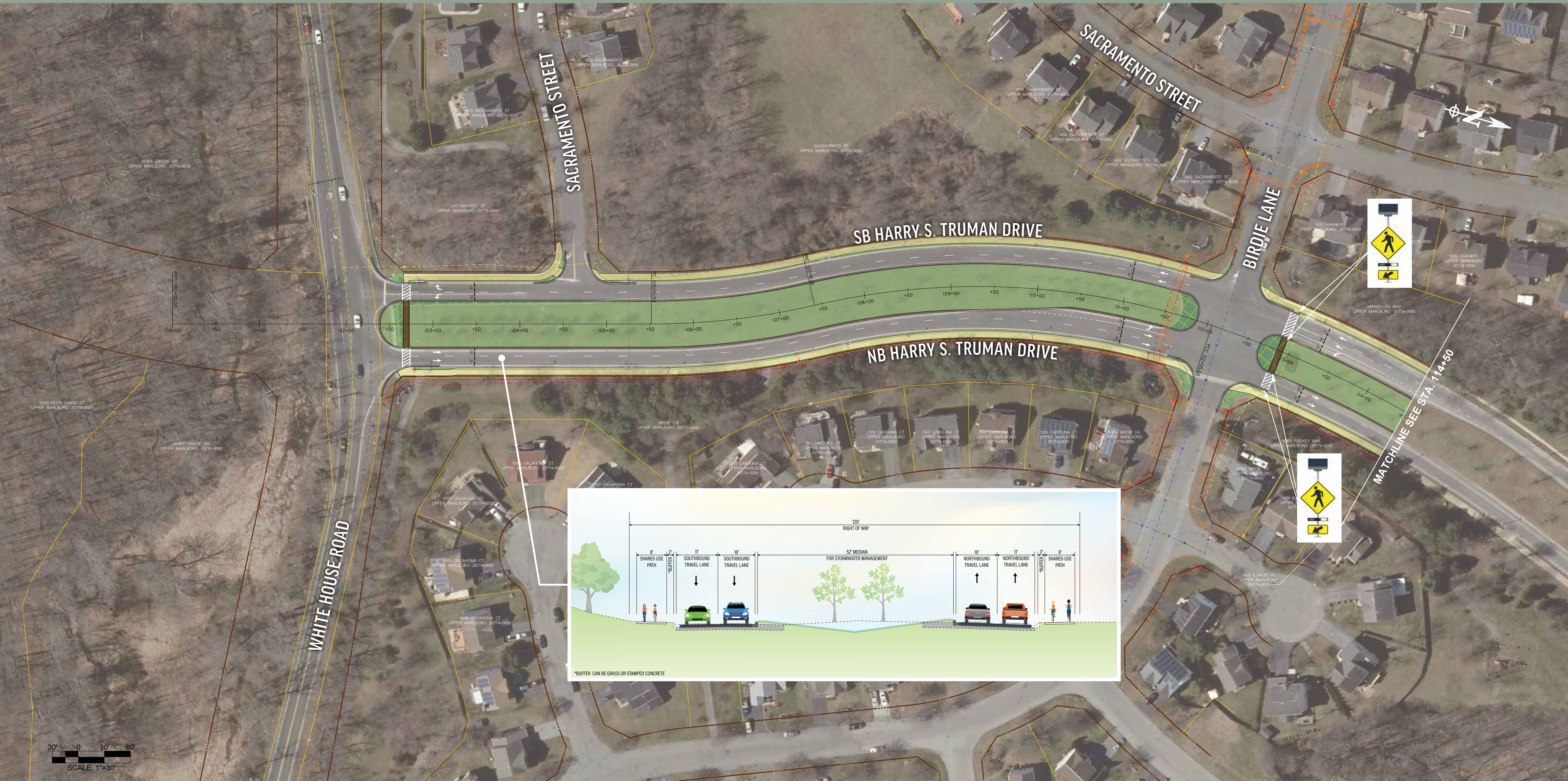
Department of Public Works and Transportation



Terry L. Bellamy  
Director

NOVEMBER 2019

Angela D. Alsobrooks  
County Executive



LEGEND | ■ EXISTING GREEN SPACE | ■ PROPOSED GREEN SPACE | ■ EXISTING CONCRETE SIDEWALK | ■ PROPOSED CONCRETE SIDEWALK | ■ SHARED USE PATH | --- PROPERTY LINE | ■ PROPOSED PAVEMENT | ■ PAVEMENT REMOVAL | --- RIGHT OF WAY LINE | ● EXISTING TRAFFIC LIGHT | ● PROPOSED TRAFFIC LIGHT





Prince Georges county

census 2020 Prince Georges Maryland Proud

Prince Georges county Proud

# HARRY S. TRUMAN DRIVE, GREEN-COMPLETE STREETS CIP PROJECT FROM WHITE HOUSE ROAD TO LOTTSFORD ROAD

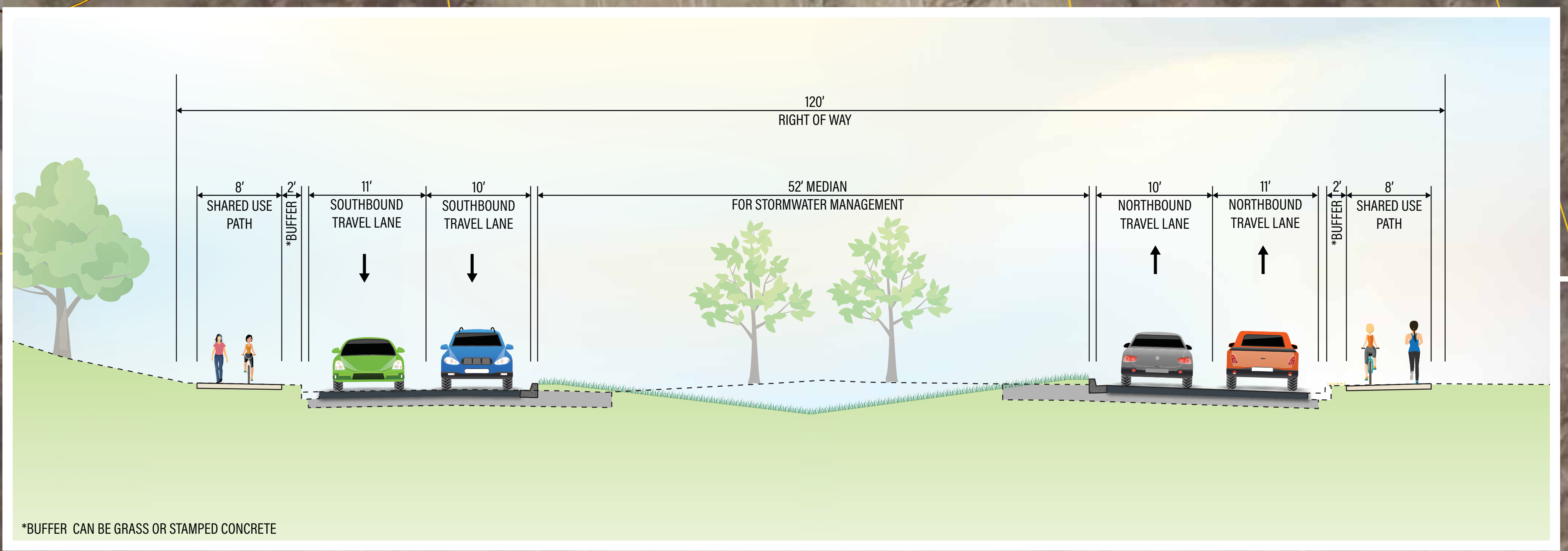
Department of Public Works and Transportation



Terry L. Bellamy Director

NOVEMBER 2019

Angela D. Alsobrooks County Executive







prince georges county MARYLAND

census 2020 Prince Georges Maryland Proud

prince georges county Proud

# HARRY S. TRUMAN DRIVE, GREEN-COMPLETE STREETS CIP PROJECT FROM WHITE HOUSE ROAD TO LOTTSFORD ROAD

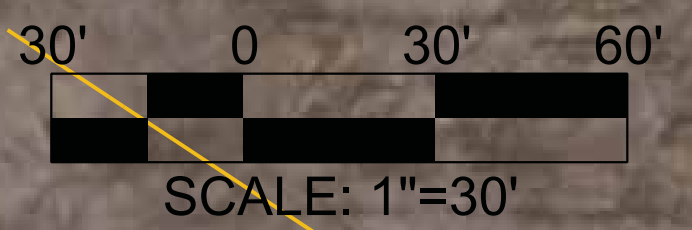
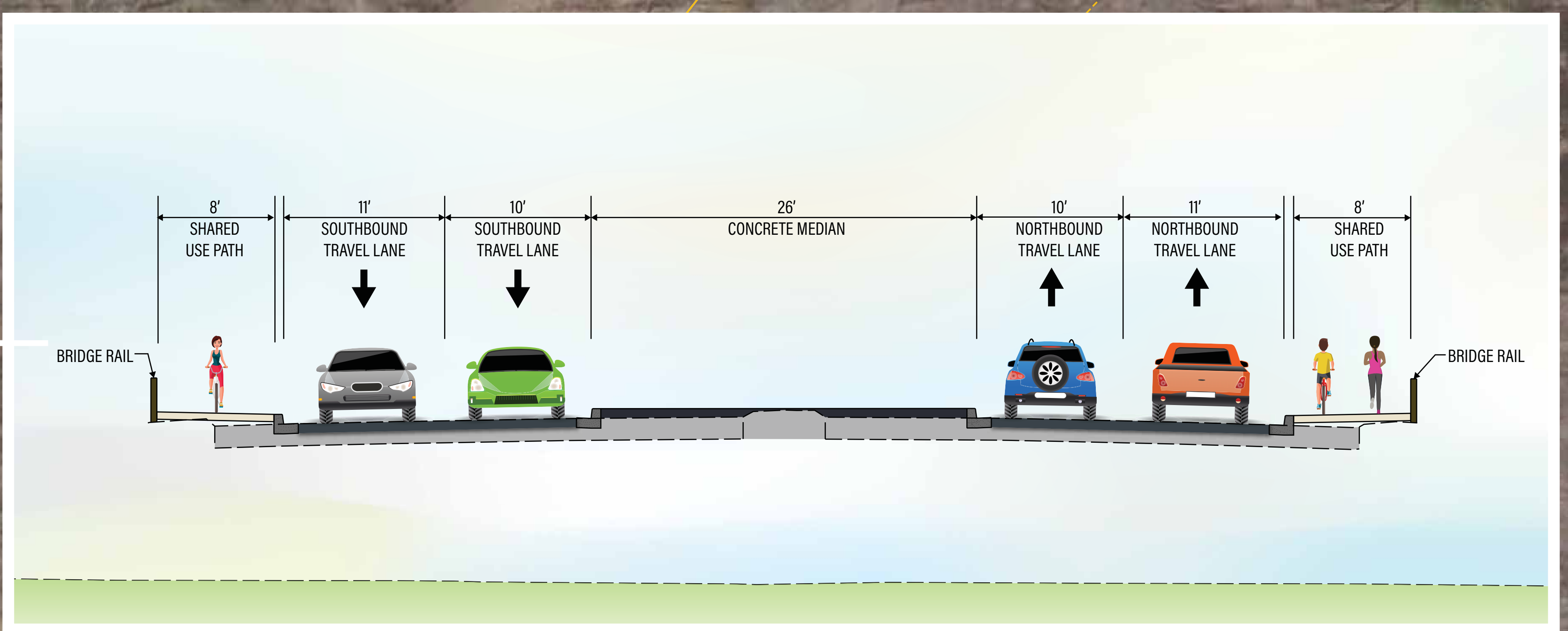
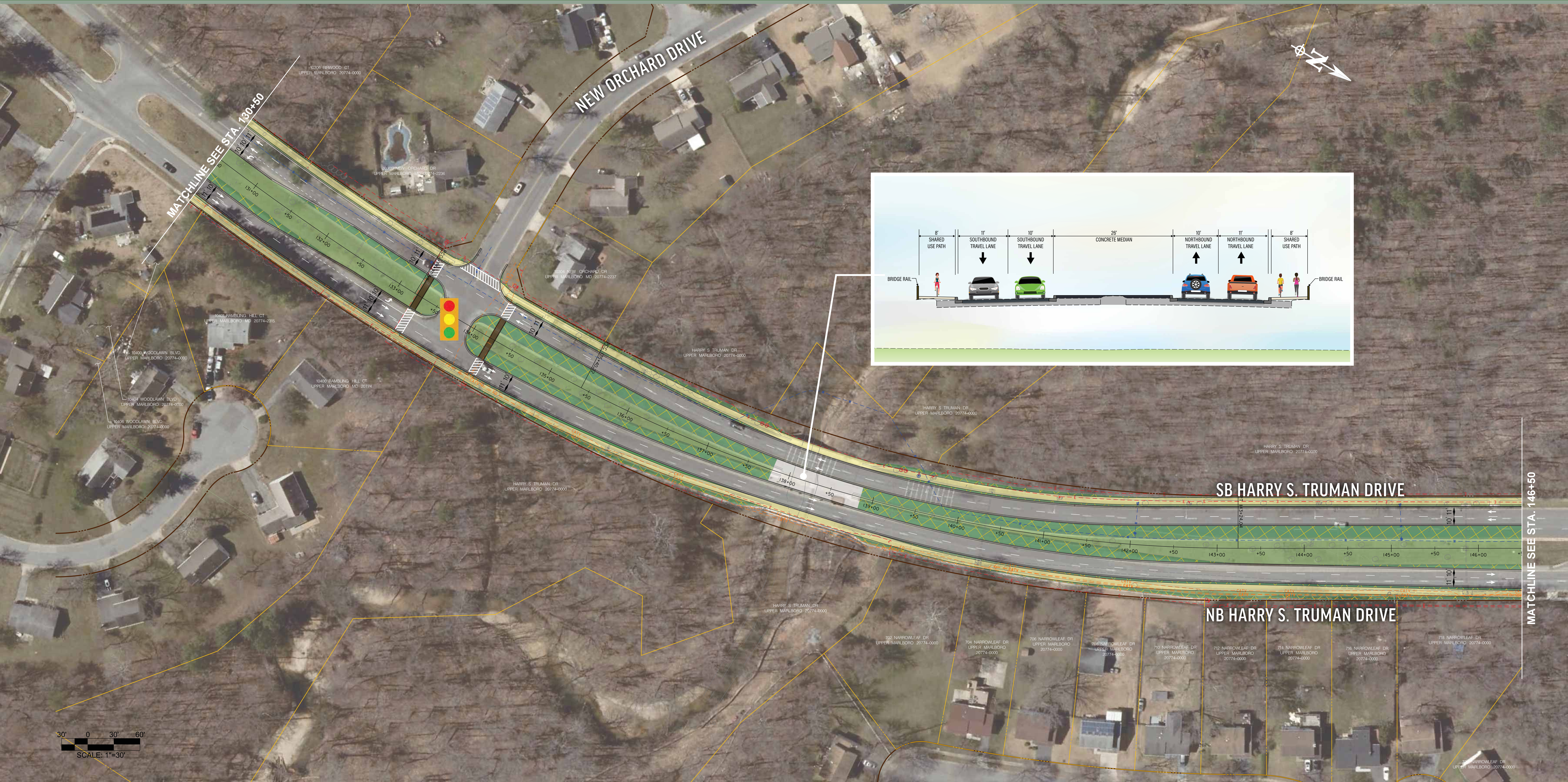
Department of Public Works and Transportation



Terry L. Bellamy Director

NOVEMBER 2019

Angela D. Alsobrooks County Executive



- LEGEND |  EXISTING GREEN SPACE |  PROPOSED GREEN SPACE |  EXISTING CONCRETE SIDEWALK |  PROPOSED CONCRETE SIDEWALK |  SHARED USE PATH |  PROPERTY LINE |  PROPOSED PAVEMENT |  PAVEMENT REMOVAL |  RIGHT OF WAY LINE |  EXISTING TRAFFIC LIGHT |  PROPOSED TRAFFIC LIGHT



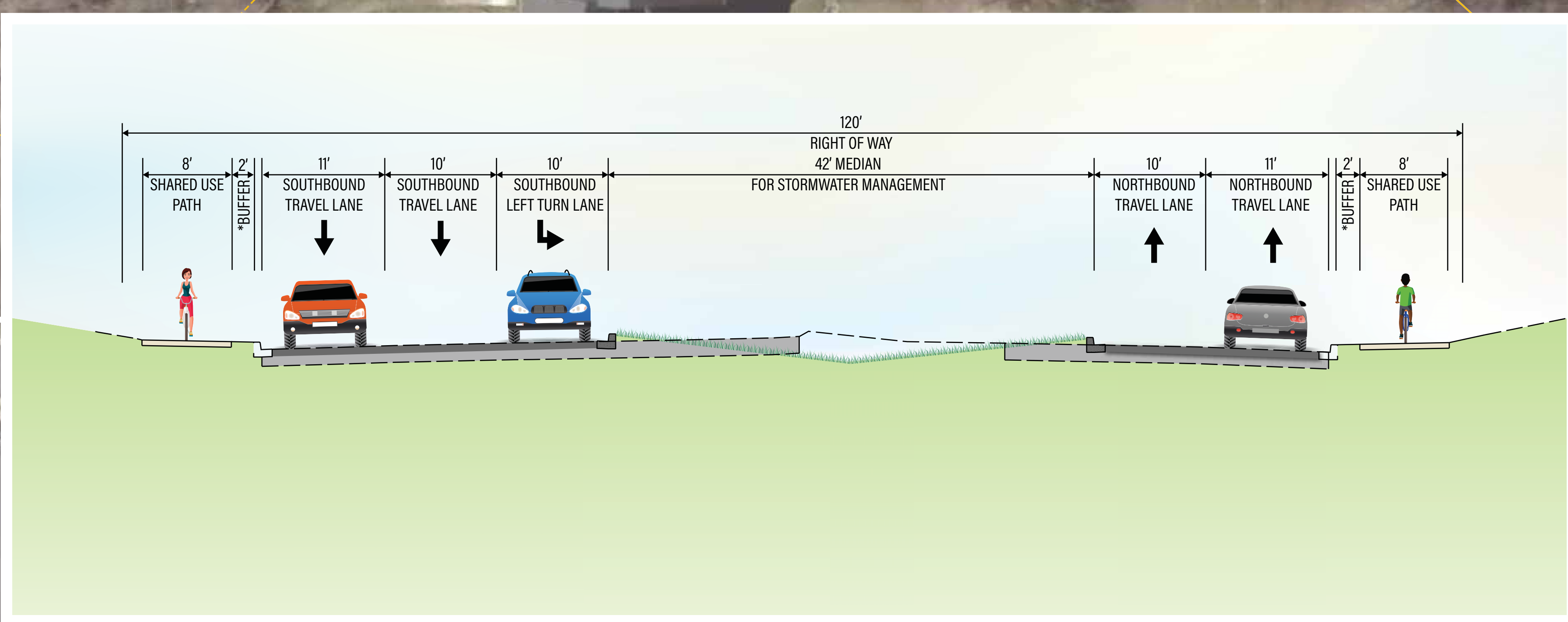
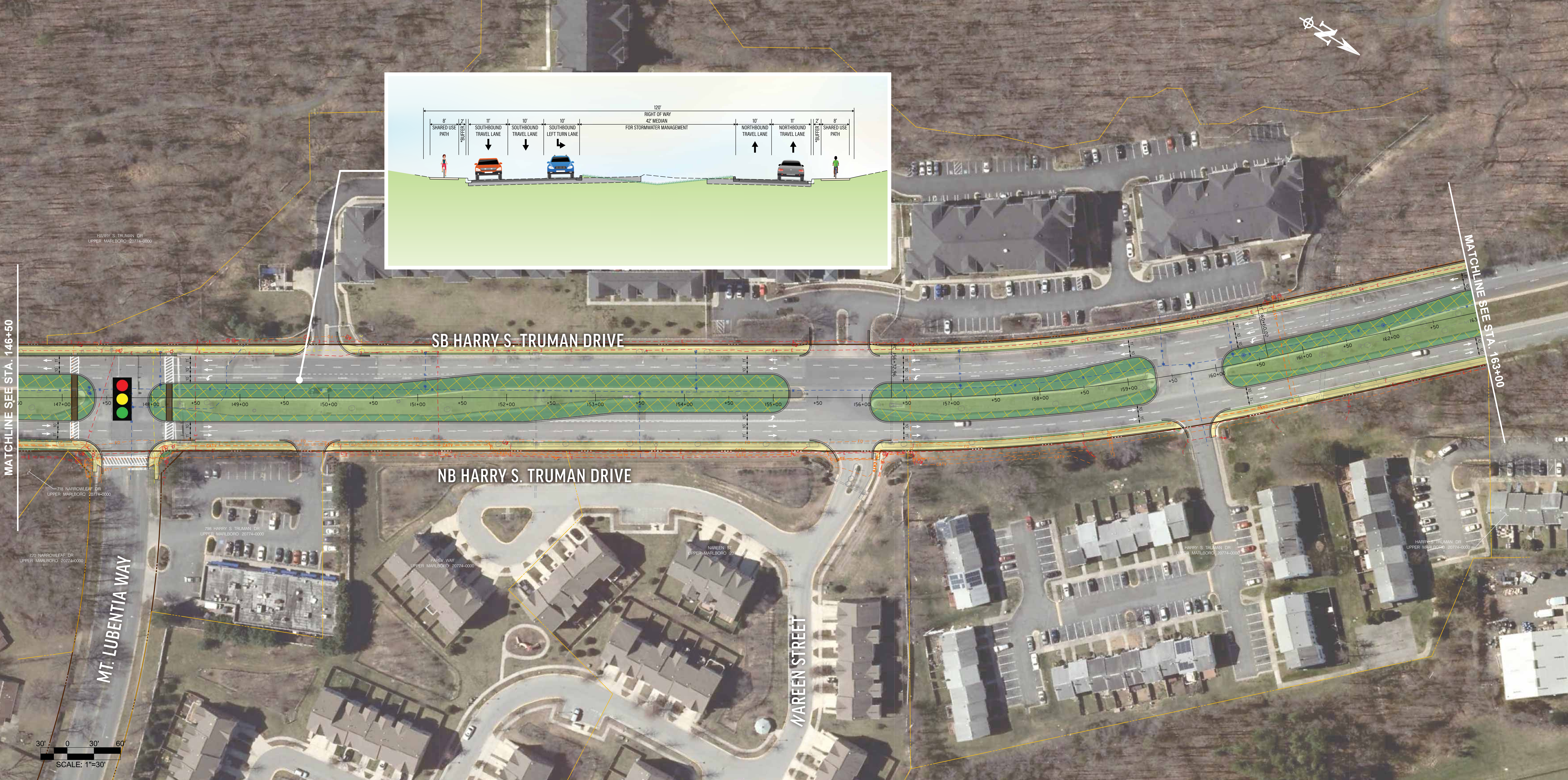
# HARRY S. TRUMAN DRIVE, GREEN-COMPLETE STREETS CIP PROJECT

## FROM WHITE HOUSE ROAD TO LOTTSFORD ROAD

Angela D. Alsobrooks  
County Executive

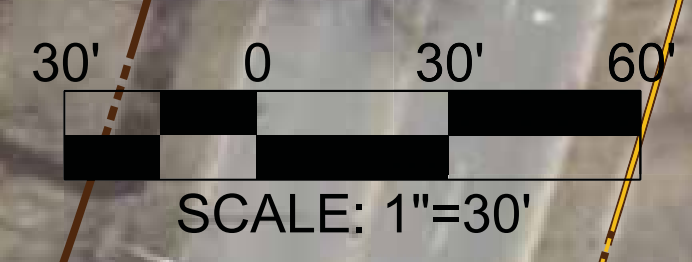
NOVEMBER 2019

Terry L. Bellamy  
Director



MATCHLINE SEE STA. 146+50

MATCHLINE SEE STA. 163+00







prince georges county

census 2020 Prince Georges County Proud

prince georges county Proud

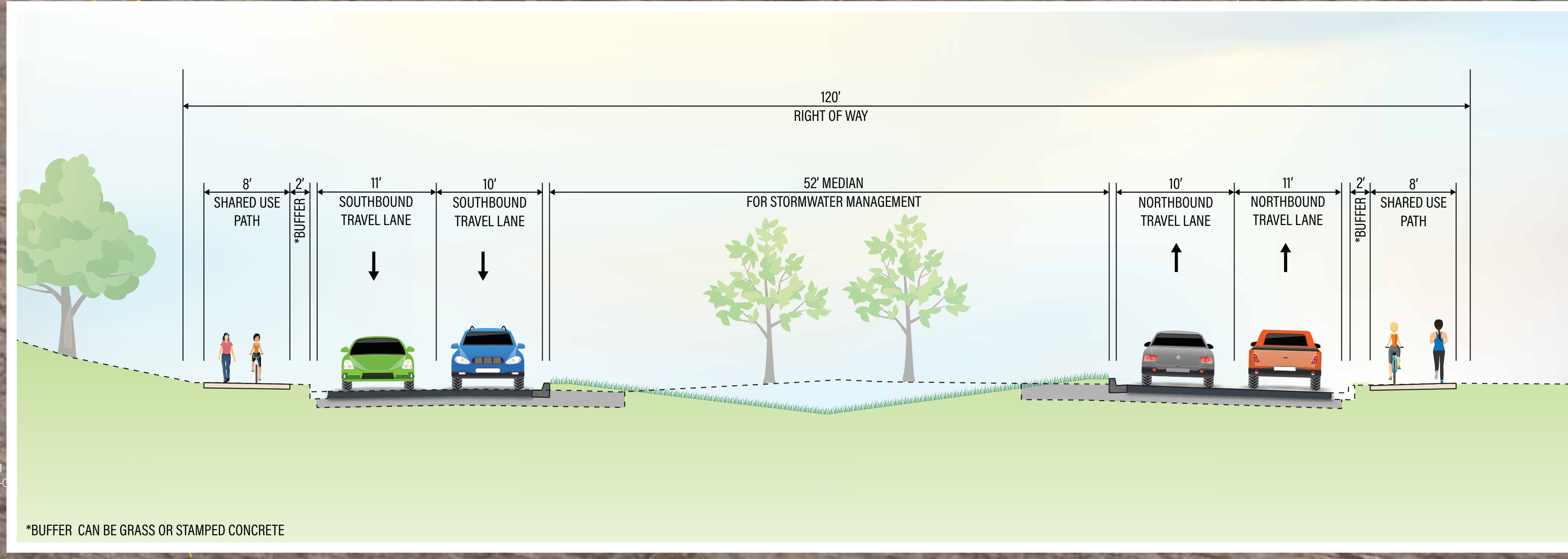
# HARRY S. TRUMAN DRIVE, GREEN-COMPLETE STREETS CIP PROJECT FROM WHITE HOUSE ROAD TO LOTTSFORD ROAD

Department of Public Works and Transportation



Terry L. Bellamy Director

NOVEMBER 2019

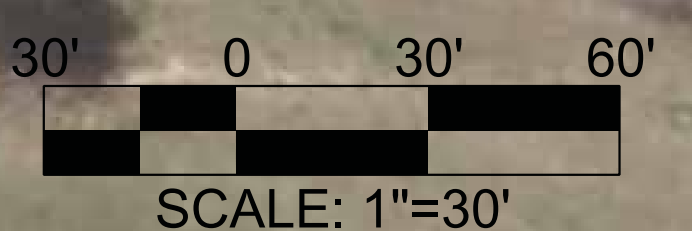


MATCHLINE SEE STA. 163+00

SB HARRY S. TRUMAN DRIVE

NB HARRY S. TRUMAN DRIVE

MATCHLINE SEE STA. 179+00



- EXISTING GREEN SPACE
- PROPOSED GREEN SPACE
- EXISTING CONCRETE SIDEWALK
- PROPOSED CONCRETE SIDEWALK
- SHARED USE PATH
- PROPERTY LINE
- PROPOSED PAVEMENT
- PAVEMENT REMOVAL
- RIGHT OF WAY LINE
- EXISTING TRAFFIC LIGHT
- PROPOSED TRAFFIC LIGHT





prince georges county

census 2020 Prince Georges Maryland Proud

prince georges county Proud

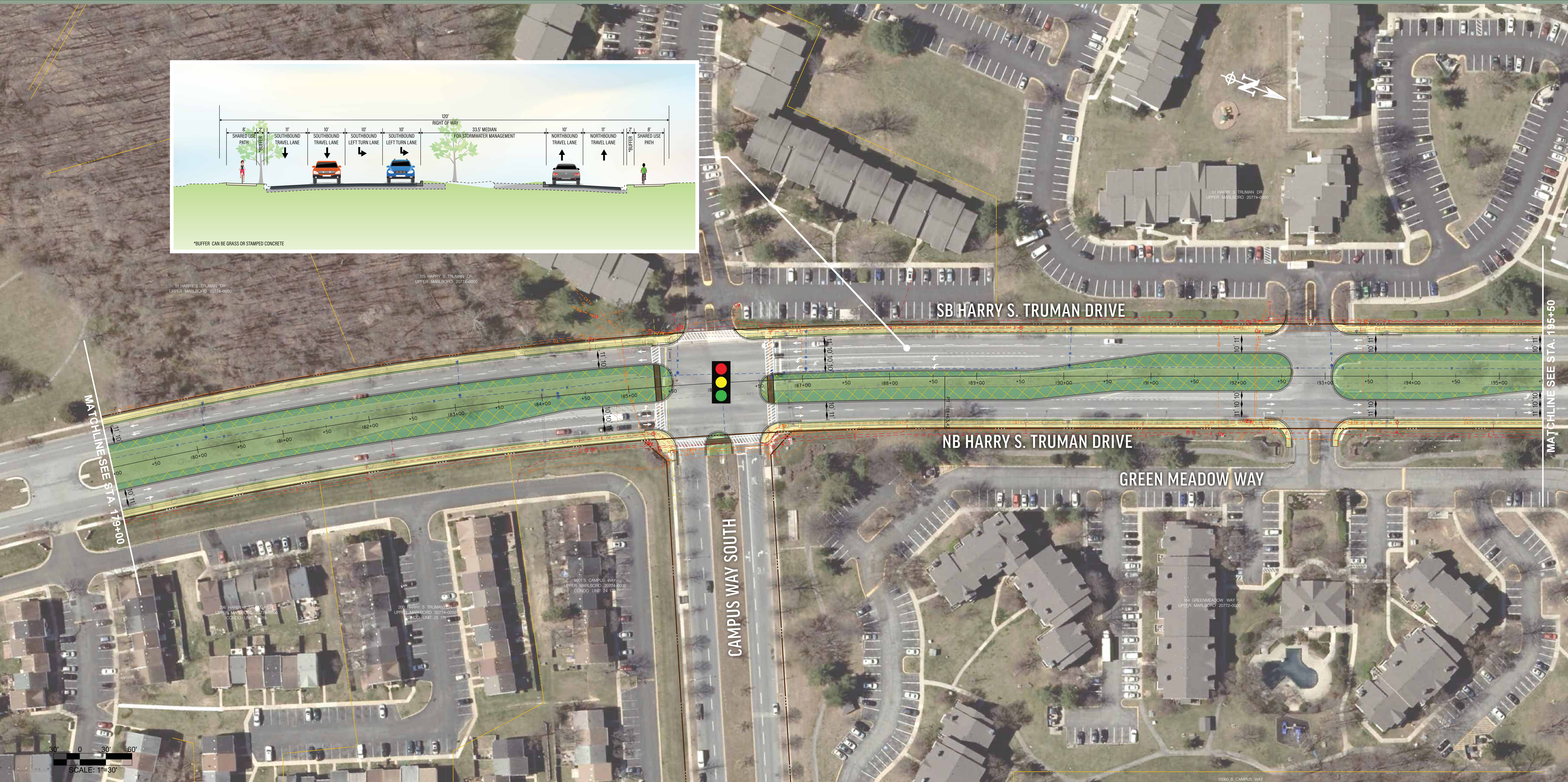
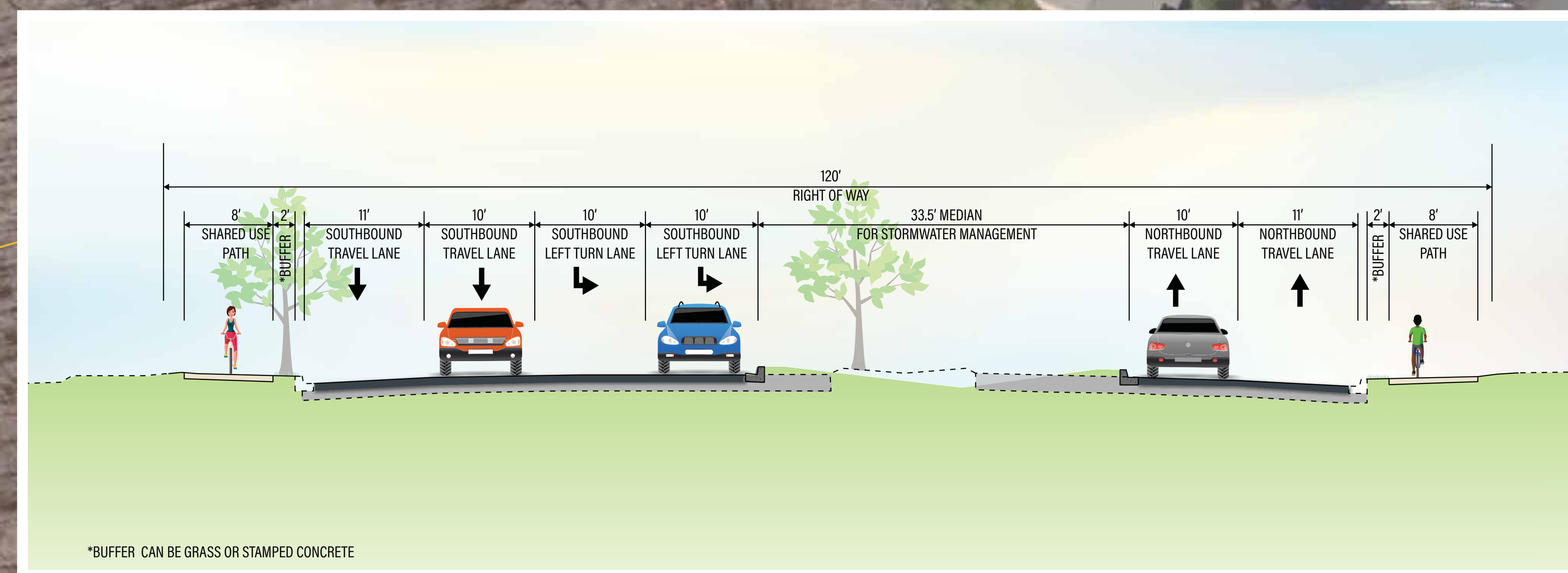
# HARRY S. TRUMAN DRIVE, GREEN-COMPLETE STREETS CIP PROJECT FROM WHITE HOUSE ROAD TO LOTTSFORD ROAD

Department of Public Works and Transportation



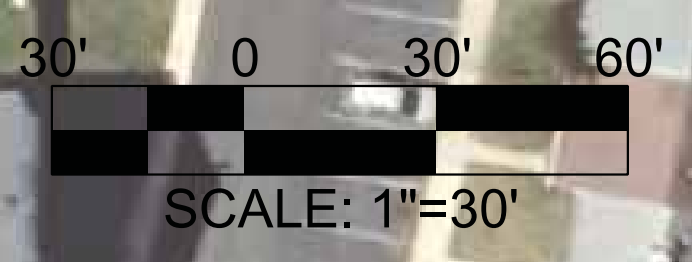
Terry L. Bellamy Director

NOVEMBER 2019



MATCHLINE SEE STA. 179+00

MATCHLINE SEE STA. 195+50



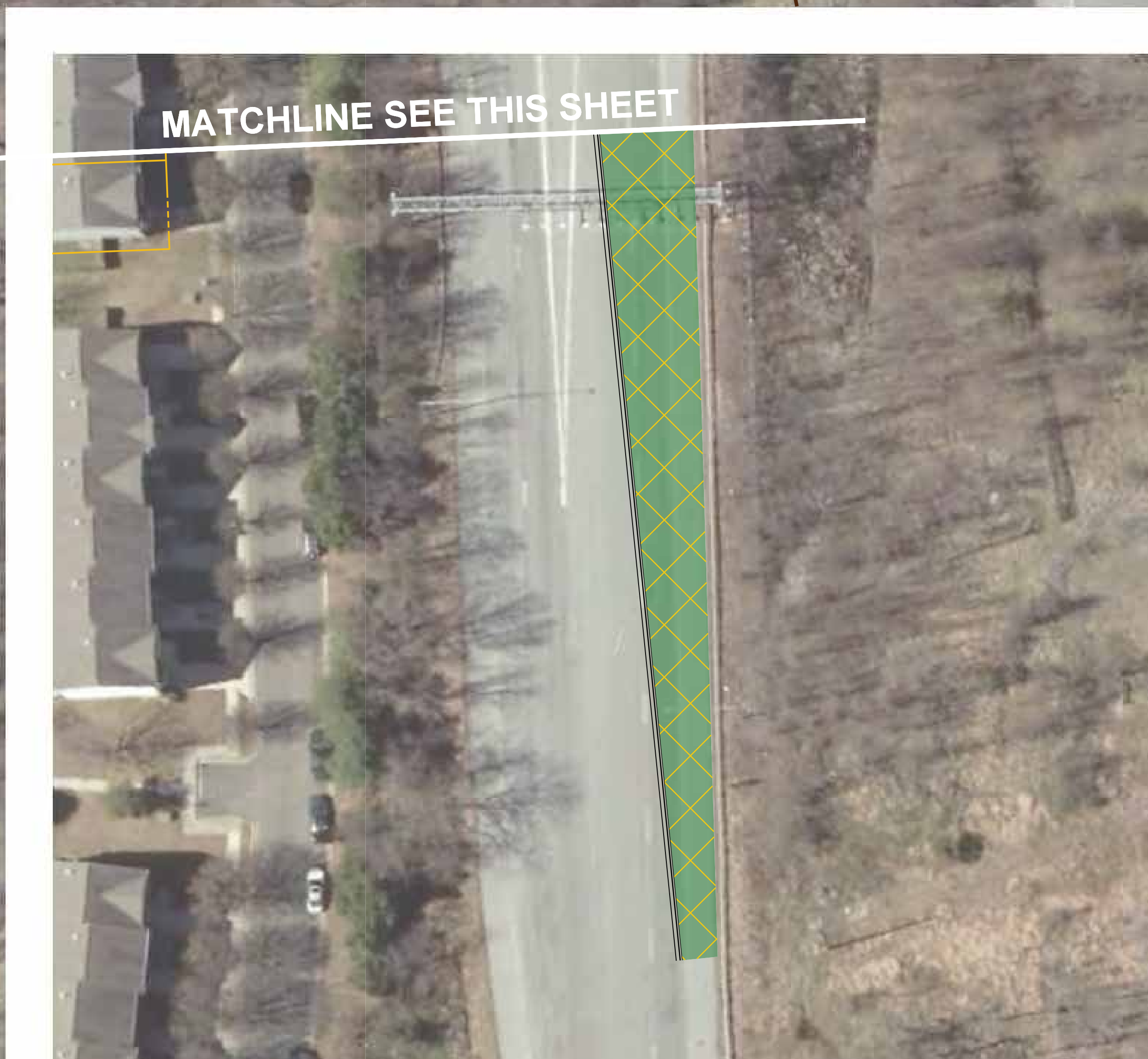
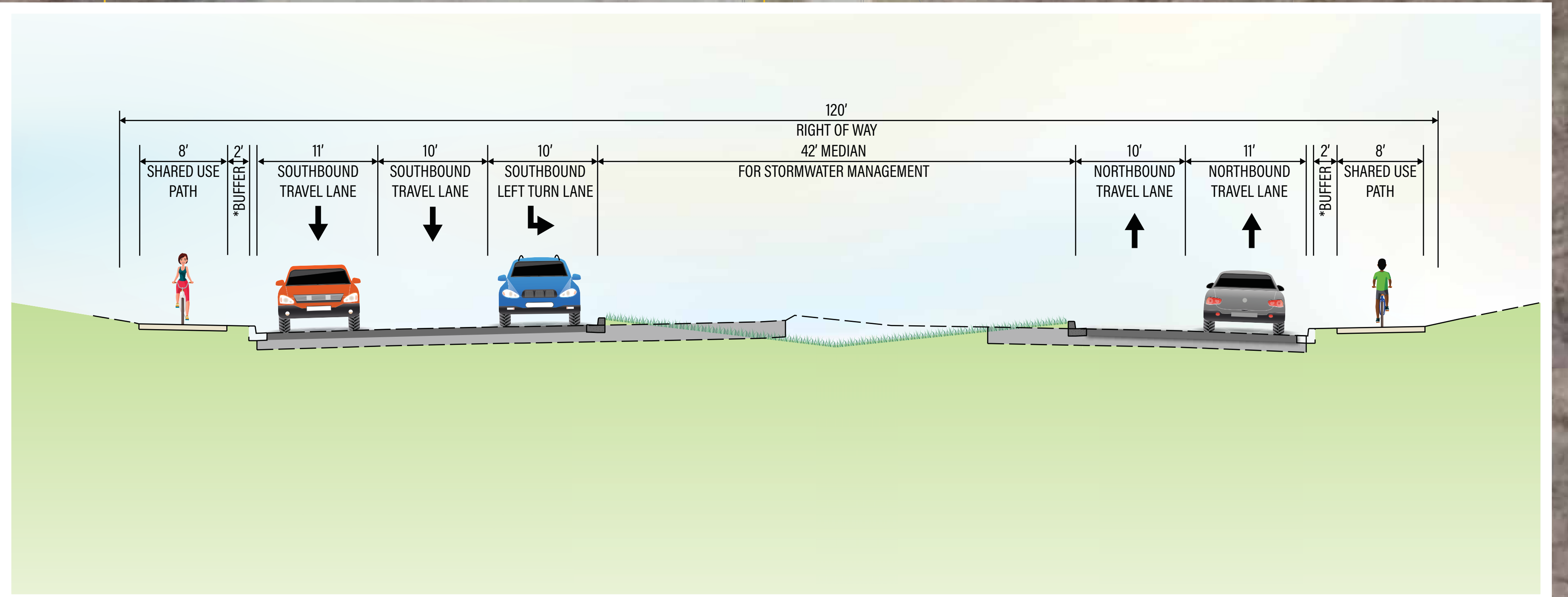
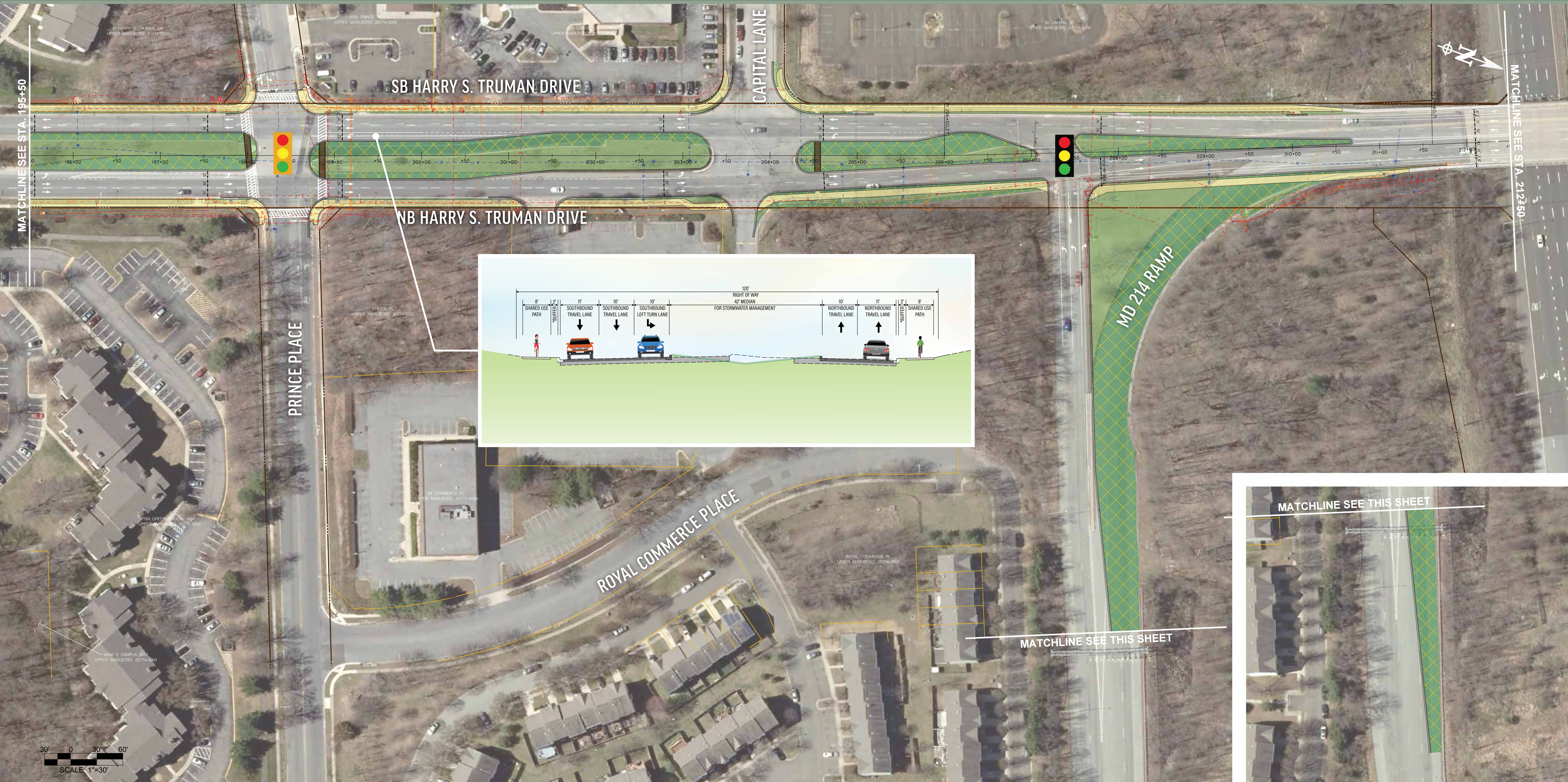
- LEGEND |
- EXISTING GREEN SPACE
- PROPOSED GREEN SPACE
- EXISTING CONCRETE SIDEWALK
- PROPOSED CONCRETE SIDEWALK
- SHARED USE PATH
- PROPERTY LINE
- PROPOSED PAVEMENT
- PAVEMENT REMOVAL
- RIGHT OF WAY LINE
- EXISTING TRAFFIC LIGHT
- PROPOSED TRAFFIC LIGHT



# HARRY S. TRUMAN DRIVE, GREEN-COMPLETE STREETS CIP PROJECT

## FROM WHITE HOUSE ROAD TO LOTTSFORD ROAD

NOVEMBER 2019





# HARRY S. TRUMAN DRIVE, GREEN-COMPLETE STREETS CIP PROJECT

## FROM WHITE HOUSE ROAD TO LOTTSFORD ROAD

Angela D. Alsobrooks County Executive | NOVEMBER 2019 | Terry L. Bellamy Director

