

# RACE TRACK RD., PEDESTRIAN SAFETY IMPROVEMENT CIP

---

Clearfield Dr. to Marquette Ln.



prince  
George's  
county

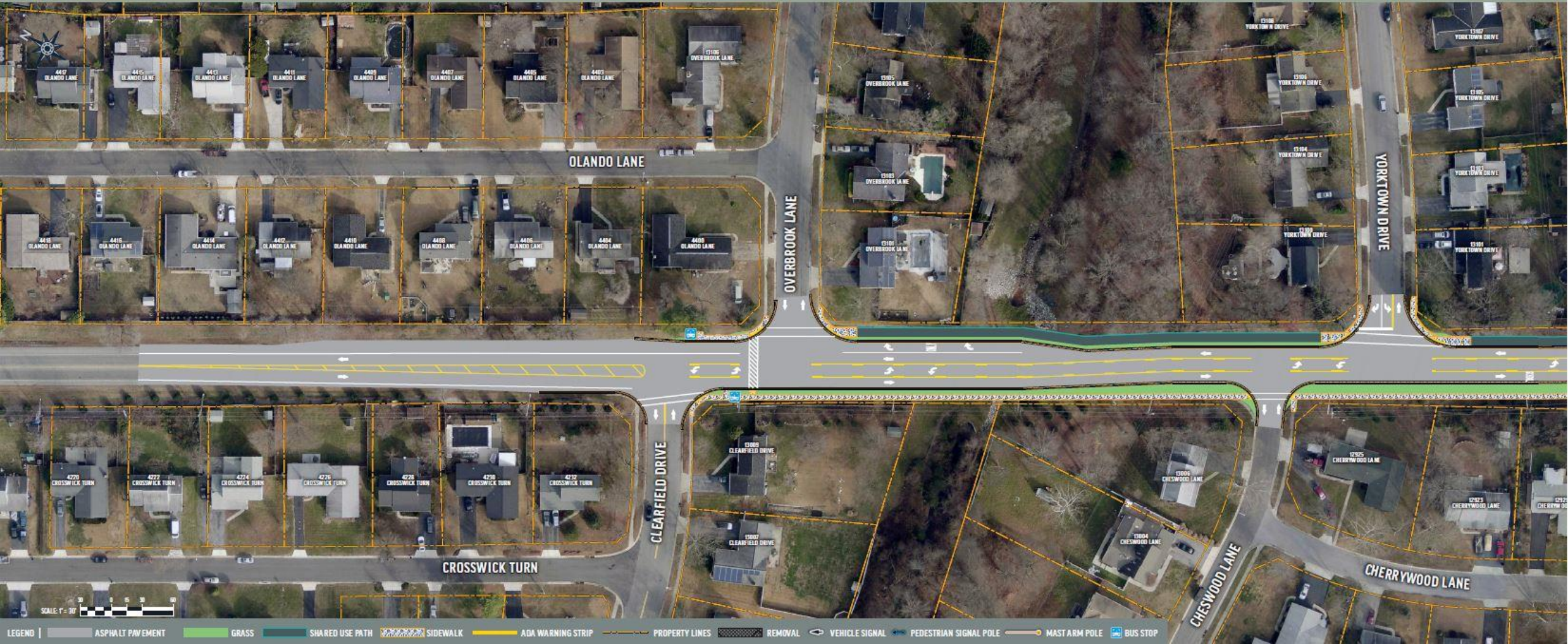
MARYLAND

Angela D. Alsobrooks  
*County Executive*



Terry L. Bellamy  
*DPW&T Director*







# PROJECT LIMITS & SAMPLE PLAN SHEET

Angela D. Alsobrooks  
County Executive

Terry L. Bellamy  
DPW&T Director





# PROJECT LIMITS & SAMPLE PLAN SHEET





## POINTS OF CONTACTS DURING DESIGN:

**Erv Beckert, P.E.**

Chief, Highway and Bridge Design Division

Mobile: 240.508.9610

Email: [ETBeckert@co.pg.md.us](mailto:ETBeckert@co.pg.md.us)

**Noah Donoghue**

Design Project Manager

Phone: 301-883-5642

Email: [Ndonoghue@co.pg.md.us](mailto:Ndonoghue@co.pg.md.us)

## POINT OF CONTACT DURING CONSTRUCTION:

**Dwight Joseph**

Chief, Construction Division

Direct: 301. 883. 5633

Email: [djoseph@co.pg.md.us](mailto:djoseph@co.pg.md.us)