



Angela D. Alsobrooks  
County Executive



Michael D. Johnson, P.E.  
Director

# Welcome to the Winter Session of the Community Partners' Meeting

## December 2022





Angela D. Alsobrooks  
County Executive



Michael D. Johnson, P.E.  
Director

# Battery Electric Bus Initiatives

Prince George's County, DPW&T

Presented by **Semia Hackett**  
Associate Director, Office of Transportation



# Battery Electric Bus Initiatives – Prince George's County DPW&T

## DPWT Zero Emission Bus Transition

- DPW&T has committed to reducing the transit carbon footprint by 70% electric fleet by 2035
- DPW&T has started coordinating efforts to launch the Proud to Charge initiative funded by the FTA \$25 million Low to No emission grant award.
- Proud to Charge purchases additional buses, the incorporation of in route charging infrastructure, installation of a microgrid system, and workforce development.

## Prince George's County DPW&T BEB Pilot Testing Updates

- DPW&T began pilot testing the Battery Electric Buses on October 31, 2022
  - Includes 12 Battery Electric Buses on three routes; 51X (Upper Marlboro), 30 (Camp Springs/Clinton), and 15X (Greenbelt)
- To date, pilot testing overall has gone well and the buses are performing as expected.
- 2023 Next Steps
  - Anticipated delivery of an 6 additional Battery Electric Buses
  - Officially launch the Proud to Charge initiative
    - Installation of charging infrastructure
    - D'Arcy Road facility enhancements
    - Design/build microgrid system



## PGC TRANSIT TRANSFORMATION INITIATIVE

WE WANT TO  
HEAR FROM  
YOU!



Angela D. Alsobrooks  
County Executive



Scan the QR  
Code to fill out  
the survey!



Michael D. Johnson, P.E.  
Director

or go to [tinyurl.com/TTISurvey1](https://tinyurl.com/TTISurvey1)



Angela D. Alsobrooks  
County Executive



Michael D. Johnson, P.E.  
Director

# Vision Zero

Prince George's County, DPW&T

Presented by Sydney Walker  
Vision Zero Communications Assistant



Angela D. Alsobrooks  
County Executive



Michael D. Johnson, P.E.  
Director

# VISIONZERO

prince george's

## SAFE STREETS FOR EVERYONE.

## Winter Community Partners Meeting Updates





Angela D. Alsobrooks  
County Executive

# The Vision Zero Strategy



Michael D. Johnson, P.E.  
Director

Vision Zero is a strategy to eliminate all traffic fatalities and severe injuries, while increasing safe, healthy, equitable mobility for all road users.

The County Executive launched Vision Zero Prince George's to make our streets safe for everyone by 2040.

The foundation of Vision Zero is the U.S. DOT [Safe System Approach](#) – a proactive response to traffic safety to ensure human mistakes never lead to serious injury or death.



The key to achieving Vision Zero is a combination of the six essential elements for a safe transportation system.



DPW&T applied to U.S. DOT's [Safe Streets and Roads for All](#) grant program. Announcements are expected in January.



Angela D. Alsobrooks  
County Executive

# Litter and Safety



Michael D. Johnson, P.E.  
Director



PGCountyDPWT @PGCountyDPWT · Nov 15

Safety continues to be our top priority as we advance our **Litter & Mowing Blitz**. **Litter** & debris can become dangerous objects that hit & harm drivers, cyclists & pedestrians. Help keep our County clean, beautiful & safe. Report **litter** & debris to PGC311. [#VisionZeroPrinceGeorges](#)



PGCountyDPWT @PGCountyDPWT · Nov 22

**Litter** and debris are public safety hazards. Once airborne, **litter** and debris can strike and damage vehicles, obscure vision and even cause injury. Secure your cargo and report any **litter** or debris on County roads to PGC311. [#VisionZeroPrinceGeorges](#) [#TalkingTrashTuesday](#)



## Social Media Posts

- Highlighting the safety hazards of litter
- Encouraging community members to take action and manage litter



PGCountyDPWT @PGCountyDPWT · Nov 29

**Litter** can interrupt the flow of traffic & lead to major collisions with injuries and even fatalities. If you see **litter** on a County roadway, report it to PGC311. Focus on your surroundings, look out for your fellow Prince Georgians & keep everyone safe. [#VisionZeroPrinceGeorges](#)



PGCountyDPWT @PGCountyDPWT · Dec 6

**Litter** of any size poses a safety hazard. Even small objects can cause injury or a crash when drivers and cyclists maneuver to avoid them. Keep your trash until you can find a trashcan, and report any **litter** or debris on County roads to PGC311. [#VisionZeroPrinceGeorges](#)





Angela D. Alsobrooks  
County Executive

# Recent Events



Michael D. Johnson, P.E.  
Director



2022 Age-Friendly Ecosystem Summit  
Vision Zero Panel  
(Hosted by George Washington University's Center for  
Aging, Health and Humanities)  
Wednesday, November 9, 10:00 AM

Bladensburg Police Department  
Traffic Safety Day  
Saturday, November 19, 11:00 AM - 3:00 PM  
Parkway Shopping Center

Street Smart Testimonial Display for  
World Day of Remembrance  
Sunday, November 20, 12:00 PM - 6:00 PM  
The Mall at Prince George's



Angela D. Alsobrooks  
County Executive

# Publicly Available Crash Data



Michael D. Johnson, P.E.  
Director

Crash Data is available on both State and County websites

## [ZeroDeathsMaryland.gov](https://ZeroDeathsMaryland.gov)

The Maryland Highway Safety Office (MHSO) of the MDOT MVA provides **real-time** and **monthly** crash data for Prince George's County.



**Year to Date Maryland Fatality Summary**

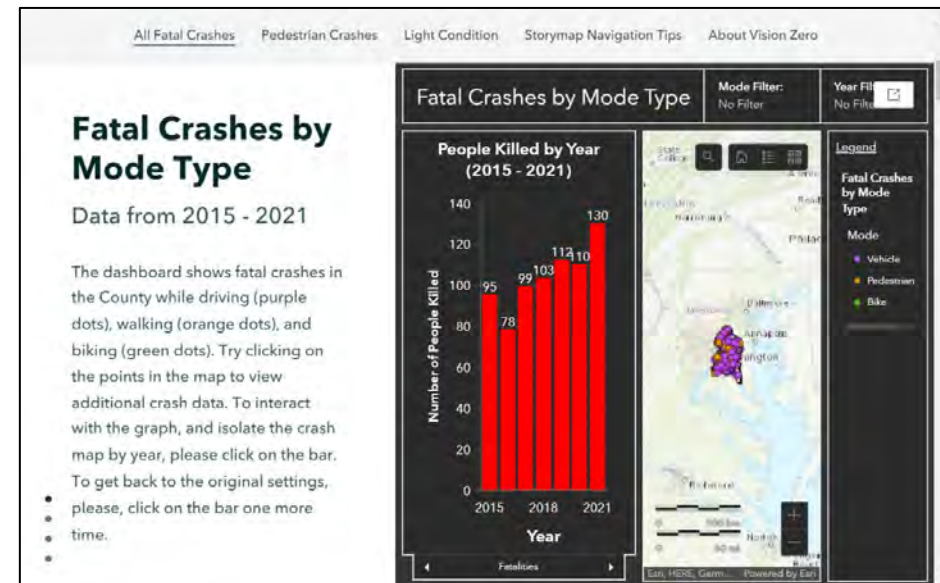
Each month data will be updated with the most recent information. Data is subject to change.

YTD Fatality Summary Report (as of 12/1/22)	<a href="#">↓</a>	2021 Fatality Summary Report (as of 9/26/22)	<a href="#">↓</a>
---------------------------------------------	-------------------	----------------------------------------------	-------------------

## [VisionZeroPrinceGeorges.com](https://VisionZeroPrinceGeorges.com)

Vision Zero Prince George's provides **2015-2021** crash data for Prince George's County.

We update our data when the state releases the finalized data for the given year. The state also confirms the data in our [High Injury Network](#).



In January, MHSO Director Tim Kerns and Vision Zero Prince George's Coordinator Andrea Lasker gave a [presentation](#) to the County Council.



Angela D. Alsobrooks  
County Executive

# Way Forward – 2023 Vision Zero Action Plan



Michael D. Johnson, P.E.  
Director



- ∨ Education Actions
- ∨ Engineering Actions
- ∨ Evaluation Actions
- ∨ Enforcement Actions
- ∨ Emergency Response Actions
- ∨ Equity Commitment

The Vision Zero Action Plan is our roadmap to achieve zero fatalities and serious injuries on our roadways.

- The 2020-2022 Action Plan contained 40 specific actions that County stakeholders can implement to achieve Vision Zero
- The actions balance long-term strategy and immediate implementation activities
- DPW&T leads the coordination for implementing the actions
- DPW&T is working to update the Action Plan in 2023

For more information, visit [VisionZeroPrinceGeorges.com](http://VisionZeroPrinceGeorges.com)



Angela D. Alsobrooks  
County Executive



Michael D. Johnson, P.E.  
Director

# Office of Highway Maintenance

Prince George's County, DPW&T

Presented by Mike Brown  
Office of Highway Maintenance



Angela D. Alsobrooks  
County Executive

# Litter & Mowing Blitz



Michael D. Johnson, P.E.  
Director

County Litter & Mowing Blitz Weekly Tracking

**WEEKS 1- 6 TOTALS**

Litter	Week 1 Totals	Week 2 Totals	Week 3 Totals	Week 4 Totals	Week 5 Totals	Week 6 Totals
Tonnage Collected	16	16.55	19.75	55	151.39	30.55
Total Linear Miles Collected	355	655.83	704.3	746	993.7	1022.8
Total Number of Bags	1,413	1464	2426	1551	2138	2075
# of Streets Completed	194	188	481	360	562	649
Mowing	Week 1 Totals	Week 2 Totals	Week 3 Totals	Week 4 Totals	Week 5 Totals	Week 6 Totals
Total Acreage	326	338.4	99.03	208	442.8	527.9
Sweeping	Week 1 Totals	Week 2 Totals	Week 3 Totals	Week 4 Totals	Week 5 Totals	Week 6 Totals
Total Curbed Miles Completed	75	22	174.4	62	200.43	39.2
# of Streets Completed	39	0	56	2	5	0

County Litter & Mowing Blitz Weekly Tracking

**WEEKS 6-9 TOTALS**

Litter	Week 6 Totals	Week 7 Totals	Week 8 Totals	Week 9 Totals
Tonnage Collected	30.55	77	33.54	102.33
Total Linear Miles Collected	1022.8	1025.4	799.2	1114.6
Total Number of Bags	2075	1914	1544	1669
# of Streets Completed	649	556	455	528
Mowing	Week 6 Totals	Week 7 Totals	Week 8 Totals	Week 9 Totals
Total Acreage	527.9	295.94	147.06	171.03
Sweeping	Week 6 Totals	Week 7 Totals	Week 8 Totals	Week 9 Totals
Total Curbed Miles Completed	39.2	214.56	391.52	51.4
# of Streets Completed	0	145	114	61

PRINCE GEORGE'S COUNTY  
Litter & Mowing **BLITZ**

Weekly Update  
Litter Removal  
& Mowing  
Data/Statistics

September 19 – December 2

*Litter Collected:* 557 tons, or 1,227,975 pounds

*Mowing Completed:* 2,975 acres, or 82,683,378 square feet of grass

*Street Sweeping Completed:* 1,285 curbed miles

**Remember, litter doesn't grow like grass!**



Angela D. Alsobrooks  
County Executive

# Litter & Mowing Blitz



Michael D. Johnson, P.E.  
Director

**BEFORE & AFTER**

Lottsford Rd.



**WE ARE IN YOUR Communities!**

**LET'S BE Prince Georges PROUD**



**BEFORE & AFTER**

Garrett Morgan Blvd.





Angela D. Alsobrooks  
*County Executive*



Michael D. Johnson, P.E.  
*Director*

# Snow and Ice Control 2022-2023 Snow Season Readiness

Presented by Mary Holden  
Office of Highway Maintenance



Angela D. Alsobrooks  
County Executive

# Snow Fighting Equipment



Michael D. Johnson, P.E.  
Director



Contractor Trucks for the 2022-2023

Season: 160

County Fleet: 135

Park and Planning 10 Wheel Dump  
Trucks: 7

Total: 302



Angela D. Alsobrooks  
County Executive

# Personnel



Michael D. Johnson, P.E.  
Director

## DPW&T Participation

Snowplow Operators: 155

Snow District Staffing: 65

Management and Administration: 32

Route Inspectors: 33

Equipment Maintenance: 11

Logistics: 18

Command Staff: 20

Vendor Inspection and Oversight: 18

Total: 287

## Total

# 352



## Sister Agency Participation

Landfill (DoE) Snowplow Operators: 15

M-NCPPC, Parks and Recreation: 50

Snowplow Operators: 36

Route Inspectors: 6

Management and Administration: 8

Requests for DPIE and OCS assistance remain unfulfilled



Angela D. Alsobrooks  
County Executive

# Snow Plan One Plan – Five Operations



Michael D. Johnson, P.E.  
Director

## Blizzard Operation

Snow accumulation that must be removed from the roadway with heavy equipment

## Full Operation

Multiple day plowing operation with greater than 4 inches of snow predicted

## Modified Operation

Plowing operation of 2-4 inches of snow

## DPW&T Only Operation

Salting operation with less than 2 inches of snow

## Snowflake Operation

Salting operation of icy spots, hilly areas and bridges



# Who Reports



## Blizzard Operation

All staff in the plan report

Heavy equipment contractors report

## Full Operation

All staff in the snow plan report

All plowing contractors report

## Modified Operation

All field staff report, including DoE and MNCPPC Inspectors

Some Contractors report

## DPW&T Only Operation

ONLY staff that work for DPW&T report

## Snowflake Operation

DPW&T CDL Drivers report



Angela D. Alsobrooks  
County Executive

# Accomplishing the Work



Michael D. Johnson, P.E.  
Director

## ❖ Snow District 1

### ❖ Glenn Dale Maintenance Shop

7317 Northern Avenue, Glenn Dale

## ❖ Snow Districts 2, 3 and 5

### ❖ D'Arcy Road Maintenance Facility

8400 D'Arcy Road, Forestville

## ❖ Snow District 4

### ❖ Brandywine Maintenance Shop

12911 Cherry Tree Crossing Road, Brandywine





Angela D. Alsobrooks  
County Executive

# Service Priority



Michael D. Johnson, P.E.  
Director

1. Pretreat primary and collector roads prior to snow event
2. Plow and treat primary and collector roads during snowfall
3. Move to plow and treat residential roadways after snowfall ends
4. Cul-de-sacs and dead-end roadways
5. Clear all roadways to "Complete" condition

Work in 12 hours shifts / 24 hours a day





Angela D. Alsobrooks  
County Executive

# Communicating Road Conditions



Michael D. Johnson, P.E.  
Director

1. Snow Districts report road conditions to the Command Center twice per operational period. Information is collected from drivers and inspectors.
2. Automatic Vehicle Locator (AVL) staff track and report the status of individual trucks and overall progress of operations.
3. Command Staff move resources or, if applicable, call-in additional snow resources.
4. Public Information Officers use social media and DPW&T website to keep the public informed of progress and instructions.





Angela D. Alsobrooks  
County Executive

# Identify Snow Route Map and Area of Property




Michael D. Johnson, P.E.  
Director

DPWT Public Snow Event Suite

Public DPWT Interactive Snow Map 3.0

Find address or place



**Welcome to Prince George's County - DPWT Public Snow Event Suite!**

In this Suite you will find, the Interactive Snow Map 3.0, Public snow AVL site, and the state

I agree to the above terms and conditions

OK

Swipe to navigate the story

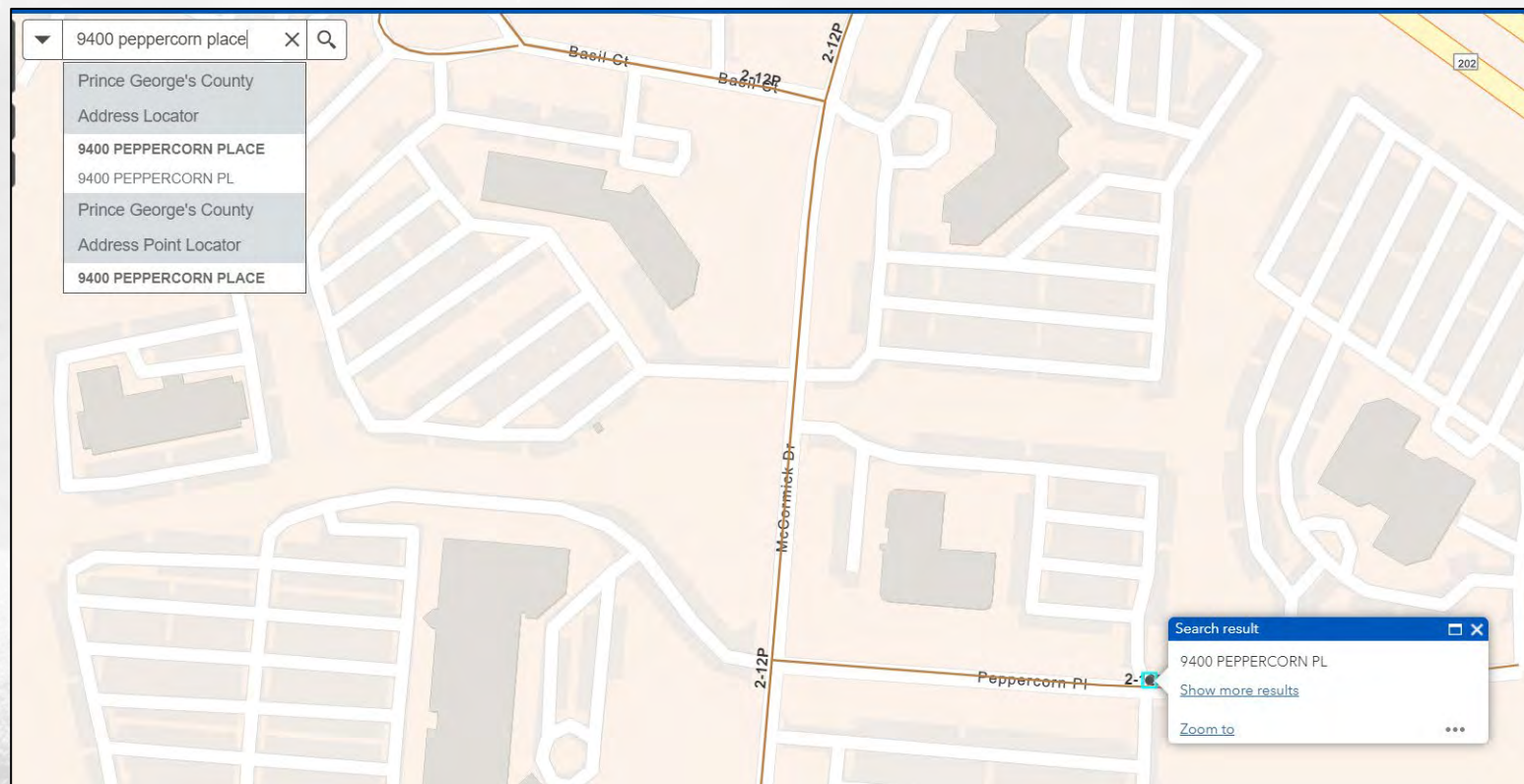
**Public Interactive Snow Map**

Next: Public Facing Snow Tracking Website



9400 peppercorn place

- Prince George's County Address Locator
- 9400 PEPPERCORN PLACE
- 9400 PEPPERCORN PL
- Prince George's County Address Point Locator
- 9400 PEPPERCORN PLACE



Search result

9400 PEPPERCORN PL

Show more results

Zoom to



Angela D. Alsobrooks  
County Executive

# PGCTrip.com



Michael D. Johnson, P.E.  
Director

View County and State Highway Administration live traffic cameras

View current pavement temperatures

Visit the DPW&T Twitter page

The screenshot displays the PGCTrip.com website interface. On the left is a map of Prince George's County with various camera locations marked by colored pins. The main content area is divided into three columns:

- Cameras:** A list of camera locations including Adelphi Rd @ Metzman, Ardwick/Arlmont Rd @ Potomac Dr, Cantor Rd @ Larchdale Rd, Garret A. Morgan Blvd @ Morgan Station, and Garret A. Morgan Blvd @ Sidcotfield Rd.
- Pavement Sensors:** Displays temperature data for two locations:
  - PAINT BRANCH @ METRO PARKING:** Pavement Temperature: 39.0°. Avg: 39.0°, High: 39.0°, Low: 39.0°. Updated: 2020-01-27 19:10:10.
  - WHITFIELD CHAPEL @ ALCONA STREET:** Pavement Temperature: 34.0°. Avg: 31.0°, High: 34.0°, Low: 28.0°.
- Twitter:** Shows two tweets from @PGCountyDPW&T regarding a community event and a transportation conference.

At the bottom, there are three live video feeds:
 

- I-85/495 AT EX 13:** Shows a view of the highway interchange.
- NATIONAL HARBOUR BLVD AT WATERFRONT ST:** Shows a view of the street intersection.
- I-85/495 AT TEMPLE HILLS RD:** Shows a view of the highway interchange.



Angela D. Alsobrooks  
County Executive

# Prince George's County Snowplow Tracker



Michael D. Johnson, P.E.  
Director

Prince George's County Gov't

**Snow Plow Tracking**  
Last updated January 5, 2022 7:15 PM

Search address

Prince Georges County Snow Operations

- Serviced within the last 12 hrs
- Serviced within the last 12 to 24 hrs
- Serviced within the last 24 to 48 hrs
- Not Serviced within 48 hrs

Showing on map

Snow Plow Tracking

Prince Georges Operations

Map type

Dark  Light

© Mapbox © Open



Angela D. Alsobrooks  
County Executive



Michael D. Johnson, P.E.  
Director

*Stay connected with us!*



Prince George's County  
Department of Public Works & Transportation

Follow us @PGCountyDPWT to stay up to date!





Angela D. Alsobrooks  
*County Executive*



Michael D. Johnson, P.E.  
*Director*

# DPIE Presentation

Presented by Avis Thomas-Lester  
Public Information Officer, DPIE



Angela D. Alsobrooks  
County Executive

Prince George's County

Department of Permitting, Inspections and Enforcement



Melinda Bolling  
Director

# Community Partners' Meeting



Winter 2022

## ***Happy Holidays!***

My staff and I are eagerly awaiting celebrating with family and friends before heading into 2023! As we move into the new year, we are implementing new service enhancements. The Momentum online system has been upgraded to include permit application processing. Inspections Division vehicles have been equipped as mobile operation centers to allow inspectors to work primarily in the field. Enforcement staff are targeting unkempt businesses and working with communities to identify problem residential properties and establish abatement plans in Operation Focused Enforcement.

Please continue to report code compliance issues to PGC311. Visit our website and see us on social media. We enjoy hearing from you.

Have a safe and happy holiday season!

*Melinda Bolling*

***From the***



# DPIE Agency Overview

Manages County government operations in the areas of permitting, business licensing, plan review, inspections and property code enforcement



Director  
Melinda Bolling

Deputy Director  
Dawit Abraham

Deputy Director  
LaMont Hinton

[dpie.mypgc.us](http://dpie.mypgc.us)  
301-636-2000

Call PGC311 to  
report complaints.

**Permitting and Licensing — Bellur Ravishankar, Associate Director** 301-636-2050  
Processes building and site plan permits; issues licenses  
Permitting — <https://www.princegeorgescountymd.gov/1497/Permits>  
Licensing — <https://www.princegeorgescountymd.gov/1214/Licensing>

**Building Plan Review — Bellur Ravishankar, Associate Director** 301-636-2070  
Reviews plans for residential and commercial projects  
<https://www.princegeorgescountymd.gov/1279/Building-Plan-Review>

**Enforcement — Valerie Cary, Associate Director** 301-883-6168  
Investigates code violations; conducts inspections at residential, commercial and industrial properties  
<https://www.princegeorgescountymd.gov/1221/Code-Enforcement-Property-Maintenance>

**Inspections — Behdad Kashanian, Associate Director** 301-636-2080  
Regulates construction, development and grading through inspection and enforcement of codes  
<https://www.princegeorgescountymd.gov/1232/Inspections>

**Site/Road Plan Review — Mary Giles, Associate Director** 301-636-2060  
Reviews/approves site and roadway plans for proposed development and road improvement projects  
<https://www.princegeorgescountymd.gov/1352/SiteRoad-Plan-Review>



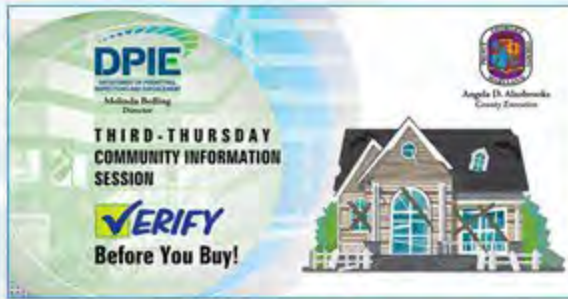


**COMING SOON** **NEW SYSTEM FOR PERMIT APPLICATIONS**

# Third Thursdays with DPIE

DPIE holds virtual Third-Thursday Community Information Sessions on the third Thursday of each month. The hour-long seminars include a presentation, comments by agency experts and a Q&A period. See announcements in the DPIE *Under Construction* newsletter and on the DPIE website and social media. Submit questions in advance to [dpiepio@co.pg.md.us](mailto:dpiepio@co.pg.md.us). Register at <https://bit.ly/3RztGlc>.

May  
2022



June  
2022



August  
2022



October  
2022



November  
2022



Join us on Dec. 15 at

“Virtual Open Forum II.”

# Who Handles That?

The DPIE Third-Thursday Community Information Sessions recently focused on which government agencies are responsible for investigating certain citizen complaints. Access the PowerPoint presentation — entitled "[Who Handles That?](#)" — by clicking the link or the slide below.

**DPIE**  
DEPARTMENT OF PERMITTING,  
INSPECTIONS AND ENFORCEMENT

Melinda Bolling  
Director

**THIRD-THURSDAY  
COMMUNITY INFORMATION SESSION**

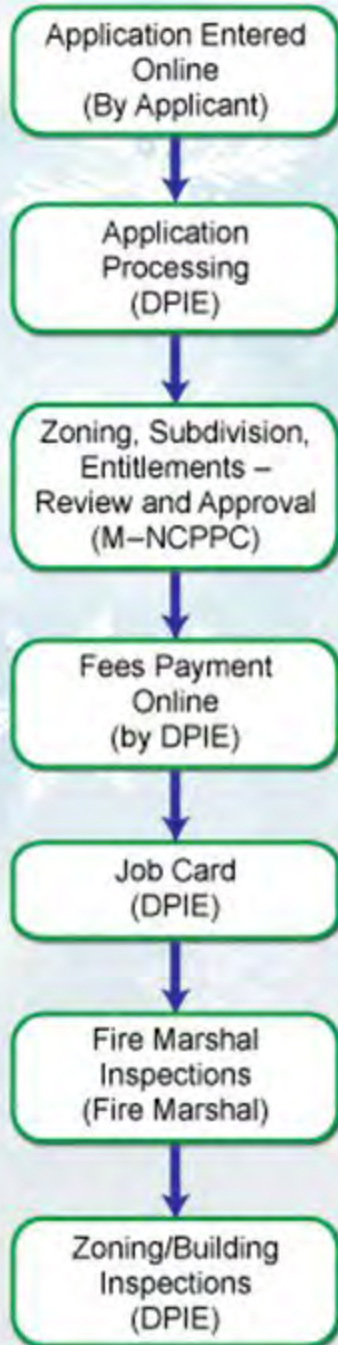
**Who Handles That?**

PRINCE GEORGES  
COUNTY  
MARYLAND

Angela D. Alsobrooks  
County Executive

# Permitting and Licensing Division

Provides administrative oversight of permits and licenses



- Provides a one-stop permit approval process to ensure that permits are reviewed in a timely manner
- Reviews and processes all permit applications for construction and alterations of residential and commercial buildings
- Provides document screening for permit application submittals
- Responds to questions regarding the status and issuance of permits and engineering plan reviews
- Provides same day review/approval for projects that meet “walk-through” requirements (currently for homeowners only)
- Issues permits, licenses and regulates various business activities per County Code
- Offers the Peer Review Program and the Third-Party Plan Review Program for review of commercial projects



# **VERIFY** Before You Buy!

Before you purchase a residential or commercial property in Prince George's County, do your due diligence by researching the following aspects of the property:



**CODE VIOLATIONS**

File a Maryland Public Information Act Request ([MPIA](#)) to check violations.



**DRAINAGE AND FLOODING ISSUES**

See a [comprehensive report](#).



**PERMIT HISTORY**

Check the [permit history](#) on any property and visit [PGAtlas](#) for additional information.



**PERMIT YOUR PROJECT**

[Read the Homeowners Guide to Permits](#) for home improvement projects that require permits.



**UNPERMITTED CONSTRUCTION (FLIPPED PROPERTIES)**

Check the [permit history](#) and the State Department of Assessments and Taxation ([SDAT](#)) to verify renovations were permitted.



**NUISANCE PROPERTIES**

File an [MPIA Request](#) to determine if the property has been referred to the Nuisance Abatement Board. Check Data Prince George's for [crime stats](#).



**RENTAL LICENSES**

For single family and short-term rentals, file an [MPIA Request](#) for information.



**ZONING (M-NCPPG)**

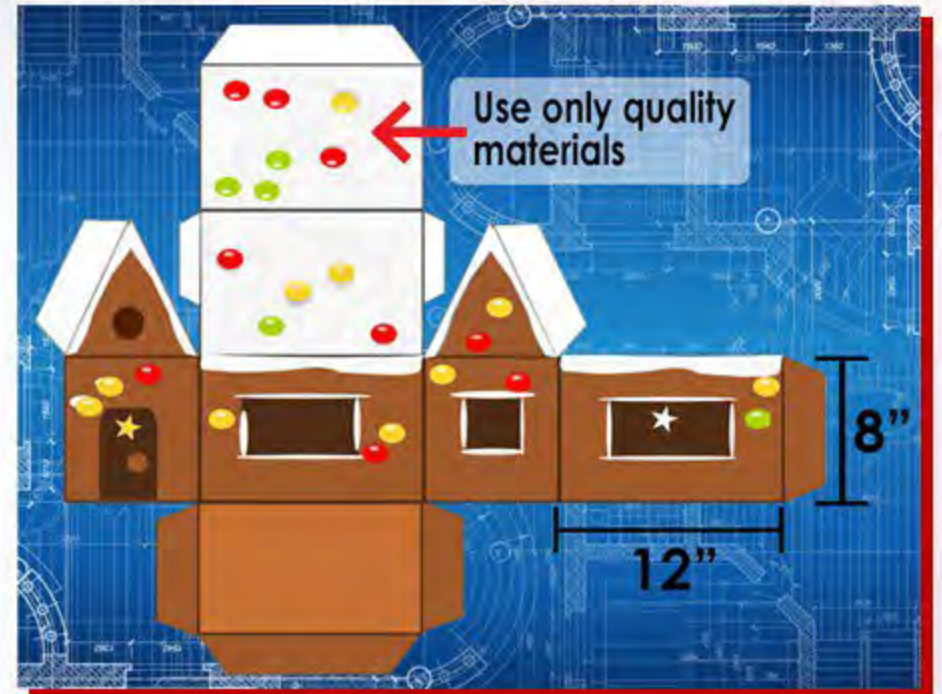
Determine if a property is zoned for commercial or residential use and find other zoning information by visiting [PGAtlas](#).

***A little investigation now will protect you from problems later!***

# Building Plan Review Division

Responsible for the review and approval of plans for residential and commercial construction

- Reviews and approves plans for all residential and commercial projects to ensure compliance with applicable codes pertaining to the following disciplines:
  - Structural
  - Mechanical
  - Energy
  - Electrical
  - Health
  - Fire protection
  - Accessibility
- Reviews and approves plans for development involving water and sewer connections, plumbing devices and natural gas connections by WSSC
- Distributes plans to internal and external agencies for processing
- Provides plan review and inspections of new properties served by well and septic systems, public swimming pools and spas, and new food service facilities to ensure compliance with State and County health regulations

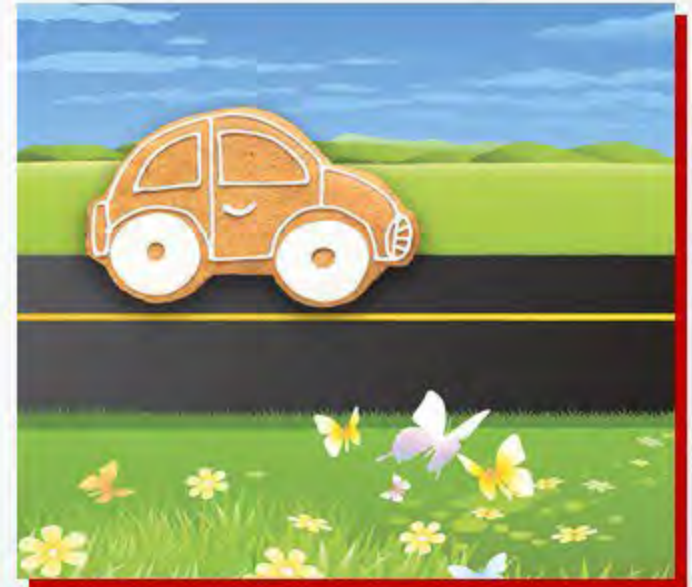


# Site/Road Plan Review Division

Reviews and approves plans for site and road construction

---

- Reviews floodplain studies
- Reviews and approves proposed utility work and small wireless facilities in public rights-of-way
- Reviews and approves plans for site and road development involving:
  - Site development
  - Grading
  - Stormwater management and storm drainage
  - State highway roads (stormwater management only)
  - County and private roads
  - Driveways
  - Paving
- Reviews and recommends issuance of site/road permits
- Reviews traffic studies and site development concept plans
- Reviews development plans relative to various environmental requirements



# DPIE Partners with Sister Agencies to Address County Drainage Issues, Flooding

DPIE regularly collaborates with the Department of the Environment (DoE), the Department of Public Works and Transportation (DPW&T) and the Prince George's Soil Conservation District (PGSCD) on drainage issues.

A comprehensive report compiled by a committee of the four agencies, "Drainage and Flooding in Prince George's County," provides helpful information about water issues.

Access the [Drainage and Flooding presentation](https://dpie.mypgc.us) at [dpie.mypgc.us](https://dpie.mypgc.us).



## Drainage and Flooding in Prince George's County





# Improperly Installed Fences May Cause Drainage Problems and Flooding!

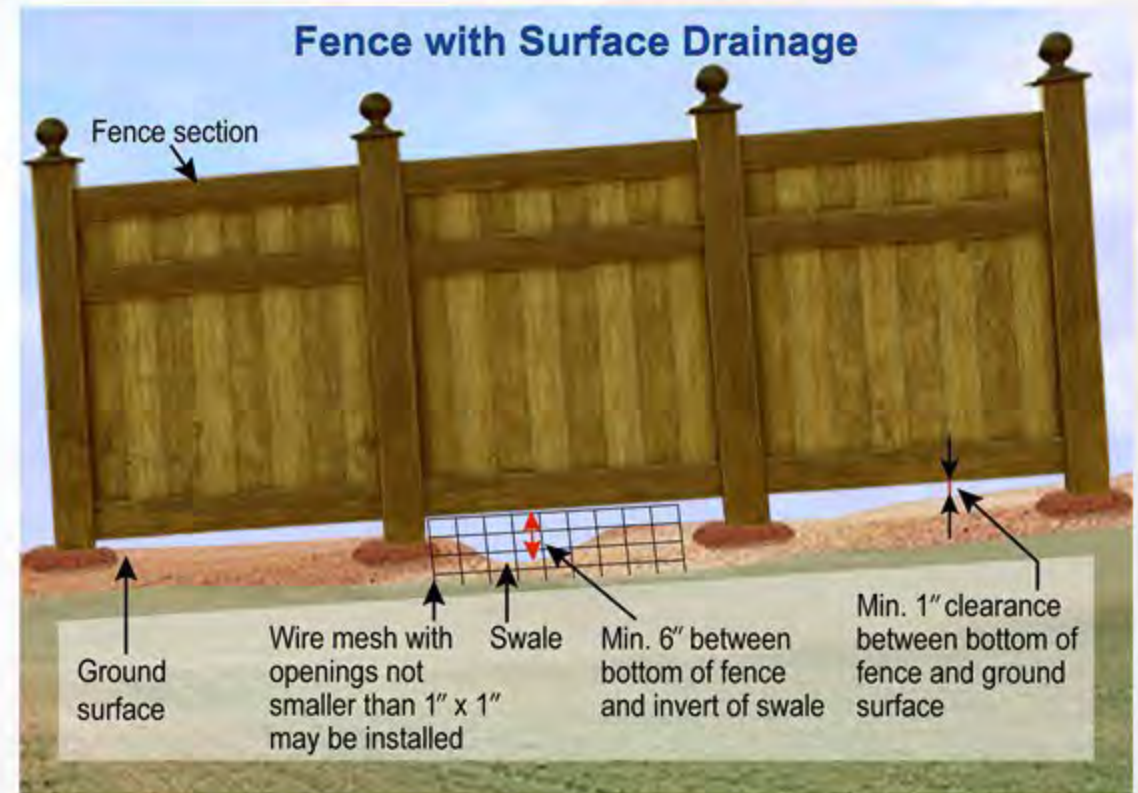
Every time it rains, many homeowners experience drainage issues on their properties. Some of these drainage complaints result from improperly installed fences. An improperly installed fence can block storm flows — runoff from storm precipitation — and cause water to pond in your yard or your neighbor's yard. Blocked water can damage fences, draw mosquitoes and hasten lawn erosion.

**Fences must be installed with storm flows in mind to ensure fences don't block stormwater flows!**

Prince George's County Code requires fences to be installed according to the following criteria:

1. For fences that cross swales — little streams on your lawn that collect stormwater — the bottom of the fence must be raised at least 6 (six) inches above the bottom of the swale, also called the “invert” of the swale. See the diagram.
2. To prevent surface stormwater — also called sheet flow — from being blocked by fences, fences should be constructed at least 1 (one) inch above the ground level, as shown in the diagram.

***Remember, fences can impede stormwater flow and cause damage to your yard or your neighbor's yard. Build fences according to County Code to avoid drainage issues, mosquitoes and expensive repairs!***



# Inspections Division

Enforces building, site and road development codes and regulations



- Provides oversight of construction, development and grading for construction and renovations
- Provides oversight of the Third-Party Inspections Program process required for new commercial construction
- Condemns and demolishes abandoned, unsafe and uninhabitable structures in the County and the municipalities
- Performs Use & Occupancy Permit (U&O) inspections to verify conformance with code regulations (except within the City of Laurel)
- Performs inspections and enforces codes for building, electrical, mechanical, energy, fire/life safety, grading, stormwater management and accessibility, along with other regulations for construction projects
- Inspects site and road development, including tree conservation, site development, and sediment and erosion control

# Inspections Division FAQs

---

**Q: *What is the easiest way for me to schedule an inspection of my work?***

A: You can schedule an inspection by calling the Automated Inspection Request and Information System (AIRIS) Line at 301-755-9000, between 7 a.m. and 11 p.m., Monday through Friday.

**Q: *There is construction in my area. The trucks leave a lot of mud and dirt in the road. Who is responsible for cleaning the street?***

A: Mud, dust or run-off from construction sites, due to truck traffic or other means, should be reported to the Inspections Division. Please enter a PGC311 service request under Construction Issues and include the name of the development as well as the intersecting streets.

**Q: *During what hours can construction be done? Is there a noise ordinance?***

A: Construction noise is permitted daily from 7:00 a.m. until 9:00 p.m. Noise that can be heard within 50 feet, or in a residence outside of these hours should be reported to the Police Department's non-emergency number at (301) 352-1200.

**Q: *I saw a vehicle dump trash on a construction site. How do I report this?***

A: If the area is an active construction site, please report the issue to the Police Department's non-emergency number at (301) 352-1200. If the area is not an active construction site, please enter a PGC311 service request under [Construction Issues](#).

**Q: *I just purchased my home and I'm concerned about the structure being unstable, who can I contact?***

A: The County investigates claims for homes less than a year old for sub-standard construction. Report the home to PGC311 and include details, including the builder's name and contact information.

**Q: *What can be done about an abandoned construction site? There hasn't been any activity in several months.***

A: Building permits expire after six months of construction inactivity and/or no scheduled inspections. Report suspected abandoned sites to PGC311.

# Municipalities Responsibilities

DPIE shares responsibility for some tasks with the municipalities

Municipality	Building	Mech. & Electrical	Health	Plumbing Permits and Inspections	Grading	Zoning	Sign Permits	U&O	Commercial and Industrial Property Maintenance	Single Family Housing	Single Family Rental	Multifamily Apartments (3 or more units)
Berwyn Heights	DPIE	DPIE	DPIE	WSSC	DPIE	DPIE	DPIE	DPIE	Town	Town	Town	DPIE
Bladensburg	DPIE	DPIE	DPIE	WSSC	DPIE	DPIE	DPIE	DPIE	DPIE	Town	DPIE	DPIE
Bowie	DPIE	DPIE	DPIE	WSSC	DPIE	DPIE	DPIE	DPIE	City	City	City	City
Brentwood	DPIE	DPIE	DPIE	WSSC	DPIE	DPIE	DPIE	DPIE	DPIE	Town	Town	Town
Brentwood, North	DPIE	DPIE	DPIE	WSSC	DPIE	DPIE	DPIE	DPIE	DPIE	DPIE	DPIE	DPIE
Capitol Heights	DPIE	DPIE	DPIE	WSSC	DPIE	DPIE	DPIE	DPIE	DPIE	DPIE	DPIE	DPIE
Cheverly	DPIE	DPIE	DPIE	WSSC	DPIE	DPIE	DPIE	DPIE	DPIE	Town	Town	Town
College Park	DPIE	DPIE	DPIE	WSSC	DPIE	DPIE	DPIE	DPIE	City	City	City	City
Colmar Manor	DPIE	DPIE	DPIE	WSSC	DPIE	DPIE	DPIE	DPIE	DPIE	DPIE	DPIE	DPIE
Cottage City	DPIE	DPIE	DPIE	WSSC	DPIE	DPIE	DPIE	DPIE	DPIE	DPIE	DPIE	DPIE
District Heights	DPIE	DPIE	DPIE	WSSC	DPIE	DPIE	DPIE	DPIE	DPIE	City	City	City
Eagle Harbor	DPIE	DPIE	DPIE	WSSC	DPIE	DPIE	DPIE	DPIE	DPIE	DPIE	DPIE	DPIE
Edmonston	DPIE	DPIE	DPIE	WSSC	DPIE	DPIE	DPIE	DPIE	DPIE	Town	Town	Town
Fairmount Heights	DPIE	DPIE	DPIE	WSSC	DPIE	DPIE	DPIE	DPIE	DPIE	DPIE	DPIE	DPIE
Forest Heights	DPIE	DPIE	DPIE	WSSC	DPIE	DPIE	DPIE	DPIE	Town	Town	Town	No Apts
Glenarden	DPIE	DPIE	DPIE	WSSC	DPIE	DPIE	DPIE	DPIE	DPIE	DPIE	DPIE	DPIE
Greenbelt	DPIE	DPIE	DPIE	WSSC	DPIE	DPIE	DPIE	DPIE	City	City	City	City
Hyattsville	DPIE	DPIE	DPIE	WSSC	DPIE	DPIE	DPIE	DPIE	City	City	City	City
Landover Hills	DPIE	DPIE	DPIE	WSSC	DPIE	DPIE	DPIE	DPIE	Town	Town	Town	No Apts
Laurel	City	City	DPIE*	WSSC	City	City	City	City	City	City	City	City
Morningside	DPIE	DPIE	DPIE	WSSC	DPIE	DPIE	DPIE	DPIE	DPIE	Town	DPIE	No Apts
Mount Rainier	DPIE	DPIE	DPIE	WSSC	DPIE	DPIE	DPIE	DPIE	DPIE	City	City	City
New Carrollton	DPIE	DPIE	DPIE	WSSC	DPIE	DPIE	DPIE	DPIE	DPIE	City	City	City
Riverdale Park	DPIE	DPIE	DPIE	WSSC	DPIE	DPIE	DPIE	DPIE	DPIE	Town	Town	Town
Seat Pleasant	DPIE	DPIE	DPIE	WSSC	DPIE	DPIE	DPIE	DPIE	City	City	City	DPIE
University Park	DPIE	DPIE	DPIE	WSSC	DPIE	DPIE	DPIE	DPIE	DPIE	Town	Town	No Apts
Upper Marlboro	DPIE	DPIE	DPIE	WSSC	DPIE	DPIE	DPIE	DPIE	DPIE	Town	DPIE	DPIE

\*DPIE's Health Section is responsible for conducting health inspections for all municipalities including the City of Laurel and state college campuses.

# Enforcement Division

Enforces property maintenance standards and appropriate zoning laws

---

- Inspects residential, commercial and industrial properties to ensure compliance with housing, property maintenance and zoning codes
- Frequently addresses issues related to tall grass and weeds, open storage, accumulation of junk and trash, etc.
- Issues citations for all residential properties not in compliance with County Code
- Enforces the Zoning Ordinance to ensure private properties comply with approved land uses
- Regulates the placement of signs on private property and in public rights-of-way
- Inspects and licenses short-term rental properties and licenses all residential single-family rental properties



# What Constitutes a Code Violation?

- Requirements related to property maintenance, housing and zoning are established by County Code and other applicable codes. Codes designate what is allowed, what is not and the actions DPIE and other agencies are empowered to take to address violations.
- Prince George's County Code is established by the County Council.
- One of DPIE's major responsibilities is conducting inspections and taking appropriate enforcement actions to address violations and bring properties into compliance.
- Inspections are conducted as part of an ongoing departmental "cleanup" strategy or on a first-come, first-served basis in response to complaints to PGC311, community surveys and other referrals. Inspectors are authorized to issue a Notice of Violation (NOV) and/or a Civil Citation to the property owner or other responsible person if code violations are identified.
- The NOV or citation references the violation(s) of the County Code and other details. A follow-up inspection may be conducted. If the violation is not abated, appropriate action will be taken, which may include the levying of fines and/or transferring the case to the Administrative Hearing Unit or District Court for adjudication.

**Citation Number:**

**DPIE**  
Department of Permitting, Inspection and Enforcement vs.

Prince George's County Department of Permitting, Inspection and Enforcement vs.

Owner's Last Name \_\_\_\_\_ First Name \_\_\_\_\_

Owner's Address \_\_\_\_\_

City \_\_\_\_\_ State \_\_\_\_\_ ZIP Code \_\_\_\_\_

Telephone Number \_\_\_\_\_ Email \_\_\_\_\_

Property Address \_\_\_\_\_

# DPIE's "Dirty Dozen" — The Most Frequent Code Violations

1. Operating a business, such as a restaurant or nail salon, out of a residence. Some businesses are allowed with a U&O permit.
2. Performing automotive work on a driveway or street.
3. Doing unpermitted construction — construction without the appropriate permits and inspections.
4. Accumulating trash and debris and dumping on your lot.
5. Parking disallowed commercial vehicles on residential property.
6. Parking vehicles on unpaved surfaces.
7. Failing to adequately maintain a property or allowing a property to fall into disrepair.
8. Leaving abandoned properties unsafe and unsecured.
9. Keeping junk cars, tires, old appliances, building materials and other open storage on your property.
10. Operating a rental property without a license — either a short-term rental or a single-family rental.
11. Raising livestock — chickens, roosters, pot-bellied pigs, etc. — and some exotic pets in a residential zone.
12. Posting signs in public rights-of-way and failing to remove political signs according to County Code.



# No Auto Repair Shops Allowed at Home!!!

---



Auto repair businesses in driveways, garages and back yards violate County Code. Setting up pop-up auto shops on streets and in cul-de-sacs is also a violation. DPIE Zoning Unit inspectors are currently working to identify illegal auto repair businesses to take those responsible to task. Report auto repair businesses at homes and on the streets to PGC311.



# Commercial Vehicle Restrictions in Neighborhoods



## County Code PROHIBITS:

- Untagged vehicles
- Vehicles parked on unpaved surfaces
- Vehicles with business advertisement
- Vehicles with dual axels or a stake platform
- Dump trucks, cranes and tow trucks
- Vehicle repair other than minor owner maintenance
- Semi-trailers and semi-trailer cabs
- Wrecked, dismantled or unlicensed trucks and other vehicles



DPIE handles vehicle complaints on **private property**; the Revenue Authority handles vehicle complaints on the **street**.

# Who Handles Trash?



This chart will help you find the appropriate place to properly dispose of litter and debris to bring your property into compliance.

VIOLATION	SOLUTION
Dumping tires	Call PGC311 to schedule a bulky trash pickup of up to four tires per trip. You may schedule additional pickups to dispose of additional tires.
Storing construction materials	Dispose of construction materials at the Ritchie Land Reclamation Landfill, 2001 Ritchie Road, Upper Marlboro. Vehicles are charged by size. Call 301-350-4059 for details. Mon-Fri, 7:00 AM-4:00 PM
Storing old furniture, broken appliances and fixtures, junk and debris	Two tightly closed bags of household items or two large bulky items, such as a sofa or recliner, may be placed next to your wheeled trash cart or can with your weekly trash. Mattresses must be encased in plastic covers. Call PGC311 to schedule a bulky trash pickup for large appliances.
Keeping large trash loads that do not qualify for weekly pickup	Transport items to the Brown Station Road Sanitary Landfill, 11611 White House Road, Upper Marlboro. Call 301-952-7625 for details. Mon-Sat, 8:00 AM-3:30 PM
Harboring hazardous materials and old electronics	Take the materials to the Household Hazardous Waste Acceptance Site and Electronics Recycling Acceptance Site, 11611 White House Road, Upper Marlboro. Thurs-Sat, 8:00 AM-3:30 PM



# Sidewalk Snow & Ice Removal Inspection Program

---

- Owners, managers and tenants of residential and commercial properties abutting sidewalks near County-owned roadways are responsible for removing snow and ice within 48 hours after it has accumulated to 2 inches or more.
- Those not removing snow/ice from sidewalks within 24 hours will receive a **reminder notice**.



- Those not clearing the sidewalks within 24 hours of the reminder may be issued a citation for a fine of \$100.
- After the first notice, a fine of \$100 per day will be assessed until the snow/ice is cleared. The County may remove the snow and assess the owner if the snow is not cleared.
- Be a good neighbor! Clear your sidewalks and assist neighbors who are unable to remove snow/ice from their properties.

*For more information, call 301-883-6168.*

# Administrative Hearing Unit (AHU) and Nuisance Abatement Board (NAB)

- The AHU handles complaints about unlawful vehicles, open storage, trash and debris, tall grass and weeds, unpermitted construction and short-term rental violations.
- Complaints are reported through PGC311 and routed to DPIE, where they are investigated and violation notices and/or citations issued. Respondents may request a hearing within 30 days; hearings are held within 30 days of the request; and decisions are rendered within five days by hearing officers.



- The (NAB) hears complaints that allege acts that disturb the public peace or endanger the health, life or safety of residents, workers or visitors in the County.
- Cases are referred by the police, fire and health departments, DPIE, and other government agencies. Citizens may not report cases to the NAB.
- If the board finds a nuisance exists, it will order the activity to cease and may assess a \$1,000 fine.

# Business Development Section (BDS)

Helps entrepreneurs navigate permitting and licensing requirements

---

The BDS was created to help spur economic development by assisting the County's business partners. The team serves as a contact between businesses and staff and coordinates with other government agencies on behalf of entrepreneurs. They offer webinars, trainings and a monthly BDS newsletter.

They assist by:

- Coordinating with agency personnel to facilitate completion of paperwork and document review
- Educating business owners about DPIE requirements and processes
- Liaising with entrepreneurs and other government agencies

For information, visit the [BDS web page](#) or email [DPIEBIZDEV@co.pg.md.us](mailto:DPIEBIZDEV@co.pg.md.us).



# DPIE Public Information Office

Serves as the official contact for information related to DPIE programs and services

---



- Acts as the information liaison between DPIE and Prince George's County residents, community leaders, homeowner and civic organizations, business partners, media outlets and other entities.
- Facilitates customer service complaint resolution and responds to inquiries under the Maryland Public Information Act (MPIA).
- Publishes periodic bulletins and a monthly e-newsletter called *Under Construction*, a summary of agency services, code requirements and other helpful information. You may subscribe at [Subscribe My PGC](#).

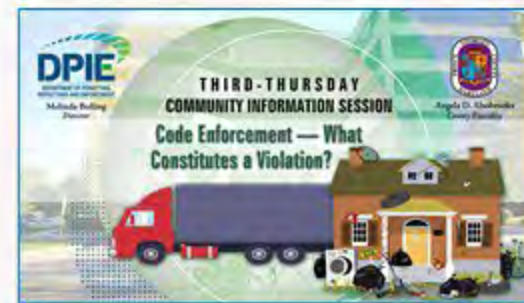
To file an MPIA request, visit [MPIA Processing at DPIE on the DPIE website](#).  
Email [dpiepio@co.pg.md.us](mailto:dpiepio@co.pg.md.us) for more information.

# DPIE Presentations

Additional information is available at [DPIE.mypgc.us](https://DPIE.mypgc.us). Access flyers, booklets and other documents by clicking on the QR code.

## Third-Thursday Community Information Session

- [Verify Before You Buy](#)
- [Mastering the DPIE Permit Application Process](#)
- [Code Enforcement — What Constitutes a Violation?](#)
- [Who Handles That?](#)
- [Open Forum](#)
- [Understanding the Residential Infill Permit Process](#)
- [The Business of Investigating Zoning Violations](#)



## Community Partners

- [Community Partners Meeting Combined Presentation — DPIE Hosts Fall 2022](#)
- [Community Partners Meeting Combined Presentation — DoE Hosts Spring 2022](#)
- [Community Partners Meeting DPIE Presentation — Spring 2022](#)
- [Community Partners Meeting DPIE Presentation — Winter 2021](#)
- [Community Partners Meeting Combined Presentation — DPIE Hosts Fall 2021](#)



## Miscellaneous

- [Obtaining a Special Event Permit](#)
- [Building and Use & Occupancy \(U&O\) Permits](#)
- [Business Licenses](#)
- [Drainage and Flooding in Prince Georges County](#)



# Start with PGC311

Do you get angry when your neighbors violate County Code requirements?



Don't do this! Instead, dial 3-1-1  
(or 301-883-4748 out of County)!

Call  
**PGC**  
**3 1 1**  
**first!**



# Thank you!

---

Contact DPIE Public Information Officer

**AVIS THOMAS-LESTER**

**athomaslester@co.pg.md.us**

**301-636-2053**

**for more information.**

Visit the DPIE website at [dpie.mypgc.us](http://dpie.mypgc.us)

---





Angela D. Alsobrooks  
*County Executive*



Michael D. Johnson, P.E.  
*Director*

# DOE Presentation

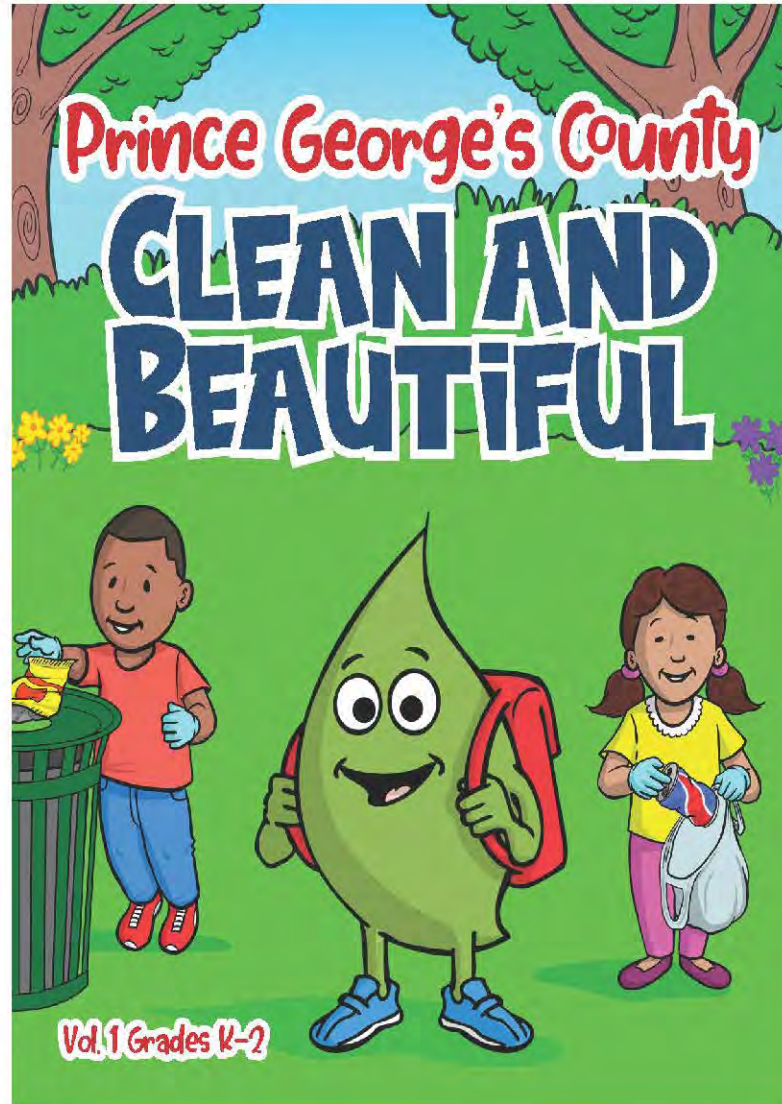
**Presented by Rodney Taylor**  
**Special Assistant to the Director for Public Engagement, DOE**

**WELCOME  
to the  
WINTER COMMUNITY  
PARTNER'S MEETING**



**Tuesday, December 13, 2022**

# MEET SPENCER THE SPROUT!



- Spencer is the brainchild of Tiaa Rutherford and DoE Graphic Artist Kenan Langston and was developed in partnership with the National Oceanic and Atmospheric Administration (NOAA) to educate children and young adults on the importance of keeping our waterways clean.
- Spencer is part of a DoE anti-litter educational framework that includes a series of marine debris activity books for kindergarten through 12th grade that teach students about protecting the environment and keeping marine debris out of our waterways and communities.
- Spencer is ready to partner with Prince George's County Public Schools teachers by offering free presentations at schools, community fairs, learning centers, and other outreach events. For more information on Spencer the Sprout's availability or the Clean and Beautiful activity books, visit the website or email [litterreduction@co.pg.md.us](mailto:litterreduction@co.pg.md.us).

# ANIMAL SERVICES

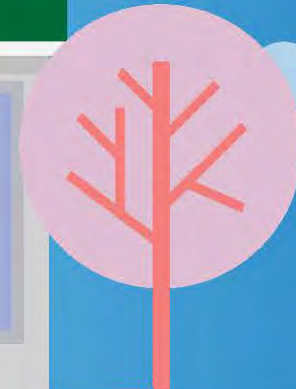
Help your pet live a healthy life by having them spayed or neutered. Visit [www.princegeorgespets4us.com](http://www.princegeorgespets4us.com) for more information and to see the many pets available for adoption.

If you are thinking about adding a new pet to your family, DoE asks you to adopt before you shop.

## ANIMAL SERVICES FACILITY

THE SPAY SPOT

Take the pledge to clean up after your pet and scoop that poop.



# NEW HOURS OF OPERATION

The Prince George's County Animal Services Facility and Adoption Center is OPEN!



## NEW HOURS OF OPERATION

Tuesday	10 a.m. – 6 p.m.
Wednesday	10 a.m. – 6 p.m.
Thursday	10 a.m. – 6 p.m.
Friday	10 a.m. - 6 p.m.
Saturday	10 a.m. – 4 p.m.

**Closed Sunday and Monday**

**Animal interactions are by *appointment only!***

### Other Animal Adoption Highlights:

- Adoption applications can be completed online or in person by appointment.
- Visit [www.princegeorgespets4us.com](http://www.princegeorgespets4us.com) for adoption discounts and special events running from September through December.



**CHOOSE TO RESCUE!**



# HOME FOR THE PAWLIDAYS

**December Adoption Event & Toy Drive**

**'Tis the Season to Adopt a Furry Friend**

**Spayed/Neutered dogs: \$10 pet license fee\***

**Dogs requiring spay/neuter are \$125 plus \$10 for a pet license\***

*\*Pet license fee for County residents ONLY\**

Help our shelter pets enjoy the holidays by donating toys for their merriment (cat toys, stuffed animals, Kongs, Nylabones). Please drop the holiday treats off to the Prince George's County Animal Services and Adoption Center, Tuesday through Friday 10:00 a.m.-6:00 p.m. and Saturdays 10:00 a.m.- 4:00 p.m.

**Visit [www.princegeorgespets4us.com](http://www.princegeorgespets4us.com) to view our adoptable dogs, then call 301-780-7200 to begin the adoption process.**

- Adopt a dog and take advantage of our special adoption rates of only \$10. For dogs that require spay or neuter services, the price is \$125 plus the \$10 pet license fee.
- Donate pet toys, stuffed animals, or a gently used blanket to help make a difference for a homeless pet. Drop off the holiday treats at the Animal Services and Adoption Center.
- For more information, visit [www.princegeorgespets4us.com](http://www.princegeorgespets4us.com) to view our adoptable dogs in their best luau attire, then call (301) 780-7201 to begin the adoption process. Bring some sunshine to a dog's life and adopt, don't shop!

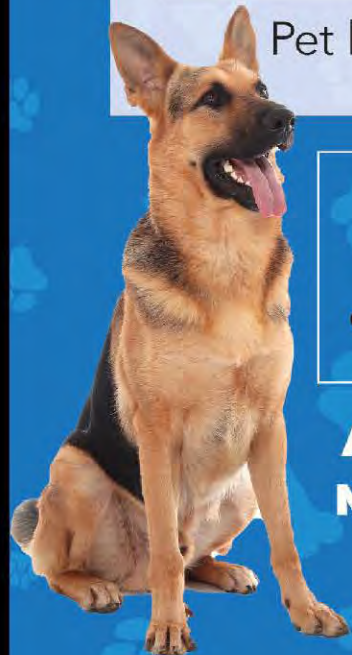
# WOOF WEDNESDAYS



## BIG DOG PET ADOPTION EVENT

Every Wednesday, every Large Dog  
**over 40 pounds** has a \$20 adoption fee

Pet license fee for County residents is \$10



For more information, view our adoptable dogs at  
**[www.princegeorgespets4us.com](http://www.princegeorgespets4us.com)**  
or call **301-780-7200** to begin the adoption process.

**ADOPT, DON'T SHOP WHEN ADDING A  
NEW FURRY MEMBER TO YOUR FAMILY**







Angela D. Alsobrooks  
County Executive



# FOSTERING

The Animal Services Division Foster Program helps meet the needs of animals that are too young or immature for adoption, injured or recovering from surgery, require special care due to illness or pregnancy, or just in need of a second chance! For anyone who may not be able to commit to owning a pet for 10-15 years, fostering allows you to care for an animal on a short-term basis.

#### REASONS TO BECOME A FOSTER PARENT:

- Provide companionship, a sense of purpose and fulfillment, and fun!
- Create space in the shelter to accommodate other homeless animals.
- Help save an animal's life!



#### Contact

Marilyn Perez  
at  
(301) 780-7202

Next Orientation

Saturday  
December 18  
10 am

FOSTERING SAVES LIVES



# STORMWATER MANAGEMENT



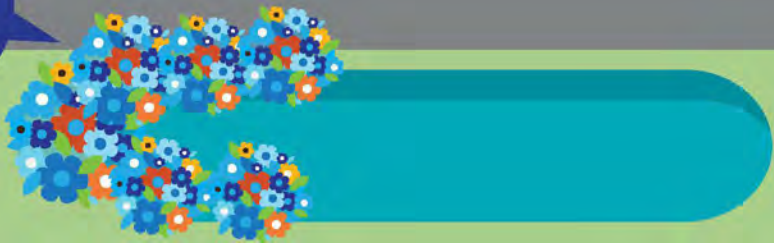
Help DoE reduce water pollution and clean local waterways by “greening” the environment around your home, business and community.



Install permeable pavement to filter rain water.

Use a rain barrel to collect rain water.

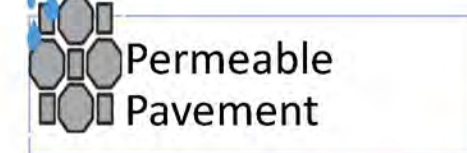
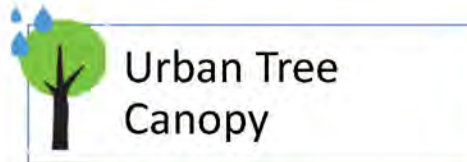
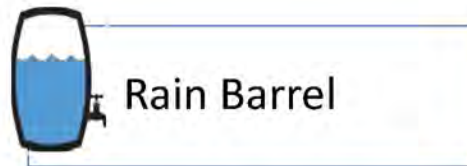
Build a Rain Garden.



# PRINCE GEORGE'S COUNTY RAIN CHECK REBATE PROGRAM



Prince George's County residents, businesses, and non-profits can apply for **cash rebates** by adopting **stormwater management practices** that improve the quality of the County's waterways and build climate resilience to localized flooding while beautifying our communities.



## Rebate Amounts



*Residential:* **\$6,000** maximum rebate

NEW

*Commercial properties and multi-family dwellings:* **\$20,000** maximum rebate

Over 899 rebates have been awarded to individual property owners for a total of \$833,303 in cash rebates.

For more information, visit **Rain Check Rebate** [bit.ly/PGCraincheckrebates](http://bit.ly/PGCraincheckrebates) (case sensitive)



# REBATE BMP'S & VALUES



Rebate ceilings of **\$6,000** for residential projects and \$20,000 for commercial, multi-family, or non-profit organizations



<u>Technique</u>	<u>Residential</u> One or more techniques may be installed for a lifetime maximum rebate of \$6,000 per property.	<u>Commercial, Homeowner Associations, Condominium Associations, Civic Associations, Multi-Family Dwelling, Non Profits, Not-for-Profit Organizations</u> One or more techniques may be installed for a lifetime maximum rebate of \$20,000 per property.
<u>Urban Tree Canopy</u>	\$150/tree	\$150/tree
<u>Rain Barrels</u>	\$2/gallon stored (Must capture 50 gallons)	\$2/gallon stored (Must capture 100 gallons)
<u>Cisterns</u>	\$2/gallon stored, 250 gallons minimum	\$2/gallon stored, 250 gallons minimum
<u>Rain Garden</u>	\$10/square foot minimum size 100 square feet	\$10/square foot minimum size 100 square feet
<u>Permeable Pavement</u>	\$12/square foot	\$12/square foot 400 square foot minimum
<u>Pavement Removal</u>	\$6/square foot	\$6/square foot; 400 square foot minimum
<u>Green Roofs</u>	\$10/square foot; minimum 1/4 roof retrofit	\$10/square foot - if less than 6" of planting material; \$20/square foot - if over 6" of planting material; minimum 1/4 roof retrofit
<u>Conservation Landscaping</u>	\$5/square foot; minimum size 250 square feet	\$5/square foot; minimum size 250 square feet



# HOW TO GET YOUR REBATE

1. Determine what practices are suitable for your property
2. Fill out and submit the rebate application
3. Schedule a pre-installation visit for all practices except rain barrels
4. Install the practice
5. Schedule a post-installation site visit
6. Receive rebate check from the County's Department of Finance

**For more information, visit Rain Check Rebate**

**[bit.ly/PGCraincheckrebates](https://bit.ly/PGCraincheckrebates) (case sensitive)**



# STORMWATER STEWARDSHIP GRANT PROGRAM

**CLEAN UP  
STORMWATER RUNOFF**

**rain**  
DEPARTMENT OF ENVIRONMENTAL RESOURCES  
**check**



**SLOW IT DOWN.  
SPREAD IT OUT.  
SOAK IT IN.**

The Prince George's County **Stormwater Stewardship Grant Program** funds on-the-ground restoration activities that improve neighborhoods, improve water quality, and engage County residents in the restoration and protection of the local rivers and streams of Prince George's County.

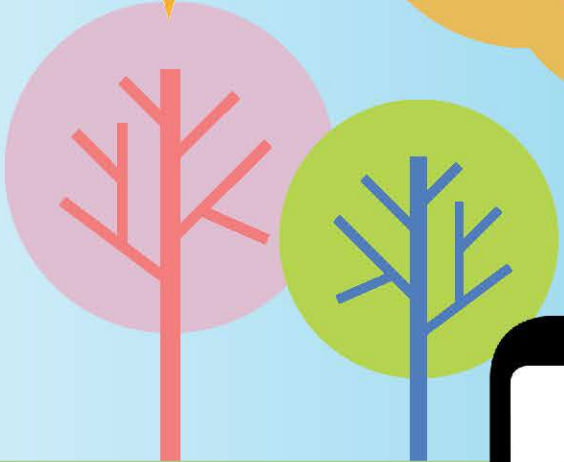
**Who can apply:** Non-profit organizations, municipalities, watershed organizations, education institutions, community associations, faith-based organizations, civic groups, and more.

For more information, visit the Chesapeake Bay Trust's website at [www.cbtrust.org/grants/prince-georges-stormwater-stewardship-2](http://www.cbtrust.org/grants/prince-georges-stormwater-stewardship-2).

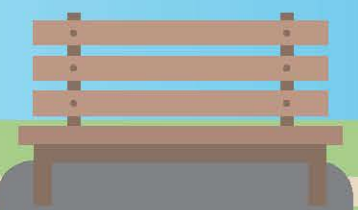
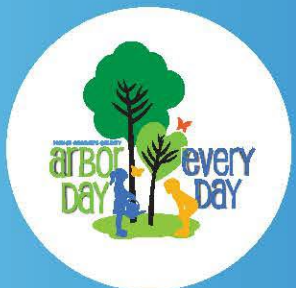


# SUSTAINABILITY

Plant native trees, shrubs and flowers.



Visit [environment.mypgc.us](http://environment.mypgc.us) to learn about DoE programs that help reduce litter including Community Clean Up events, Storm Drain Stenciling and PGCLitterTRAK.



Volunteer to participate in a Community Clean Up.





# CLIMATE RESIDENT ADVISORY GROUP

The newly formed Climate Resident Advisory Group (CRA) will help guide the implementation of the County's Climate Action Plan (CAP) and serve on the Climate Implementation Task Force.

CRA members, also known as resident advisors, will advise on strategies and actions to propel the County toward a carbon-neutral and climate-ready future.

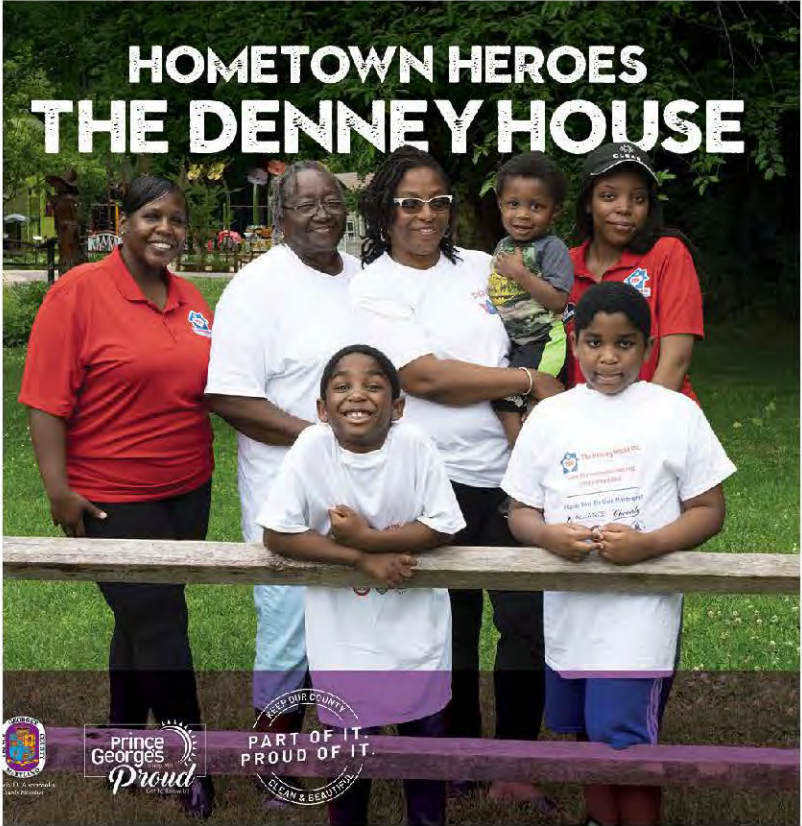
DoE encourages all residents to review the CAP found at [mypgc.us/climateactionplan](https://mypgc.us/climateactionplan) and to receive updates on the CRA.



# BEAUTIFICATION CAMPAIGN

We are making significant changes to reduce litter, increase recycling, prevent illegal dumping, and more. The County has a marketing awareness Beautification Campaign featured throughout the County and online that includes bus stop ads, digital media, bus wraps, television commercials, videos, and print ads. The campaign is designed to remind our residents that with their help, we can create a cleaner, greener environment today and for the future generations of Prince Georgians.

To learn how to help and receive more information about the campaign, visit [www.pgcproud.com](http://www.pgcproud.com).



# LEARN HOW TO USE... PGCLitterTRAK

PARTICIPATING IN A SPRING CLEANUP OF  
A STREAM, SCHOOL YARD, NEIGHBORHOOD,  
PARK OR WALKING TRAIL?

Before heading out, join us at a special learning session for PGCLitterTRAK. This easy-to-use smartphone app can be used by businesses, community groups and individual citizens to report their litter collection efforts, amount of trash collected and collection locations.

Participants **must have a username and password prior to training**. Sign up at: [bit.ly/littertrakregistration](http://bit.ly/littertrakregistration)

PGCLitterTRAK requires a username and password, which is available by registration only.



The registration form graphic features the PGC LitterTRAK logo on the left, which includes a location pin with 'PGC' inside and the words 'Litter TRAK' below it. To the right of the logo are two input fields: the top one is preceded by a person icon and the bottom one by a padlock icon.

## Help DoE Clean Up Our County!

- To help residents and communities keep track of the amount of litter collected, DoE has a smartphone app called PGCLitterTRAK designed to assist County residents, community organizations, and businesses in reporting trash and debris collected during individual and group cleanup events.
- For more information or to learn how to become involved in the fight for a “Litter Free PGC,” contact Tiaa Rutherford, Litter Reduction Program, at [litterreduction@co.pg.md.us](mailto:litterreduction@co.pg.md.us).

# RESOURCE RECOVERY

From Christmas trees and leaves to household products and electronics, County residents and business owners are recycling more and trashing less.



Use brown paper bags for your yard trimmings and avoid putting plastic bags in your recycling toter.



Your yard trim and food scraps are providing FREE mulch for County residents, and LeafGro and LeafGro Gold compost.

# WASTE COLLECTION HOLIDAY SCHEDULES

## CHRISTMAS DAY AND NEW YEAR'S DAY


**PRINCE GEORGE'S COUNTY**  
 Condado de Prince George

### CHRISTMAS DAY

HOLIDAY WASTE COLLECTION SCHEDULE

*Cambio de fecha de recolección de residuos por el día festivo*



 DEPARTMENT OF THE ENVIRONMENT  




MON	TUE	WED	THU	FRI
LUNES	MARTES	MIÉRCOLES	JUEVES	VIERNES
 <b>NO ORGANICS COLLECTIONS WILL OCCUR</b> (includes food scraps and yard trim) <b>No scheduled bulky trash pickups for white goods, appliances, or scrap tires on Monday, December 26.</b> <small>Las colecciones de materiales orgánicos (incluye desperdicios de comida y podas de jardín) no se efectuarán el día festivo. No se efectuarán recolecciones de basura voluminosa para electrodomésticos, aparatos blancos, o neumáticos el lunes 26 de diciembre.</small>	 <b>NO CHANGE TO CURBSIDE BULKY, RECYCLING, AND TRASH COLLECTION</b> No habrá cambios a los servicios de recolección en la acera de basura voluminosa, reciclaje y basura regular.			

For more information on the holiday schedule changes, please contact PGC311  
 Para obtener más información sobre los cambios por el día festivo, comuníquese con PGC311










**PRINCE GEORGE'S COUNTY**  
 Condado de Prince George

### NEW YEAR'S DAY


HOLIDAY WASTE COLLECTION SCHEDULE

*Cambio de fecha de recolección de residuos por el día festivo*


 DEPARTMENT OF THE ENVIRONMENT  




MON	TUE	WED	THU	FRI
LUNES	MARTES	MIÉRCOLES	JUEVES	VIERNES
 <b>ORGANICS COLLECTIONS WILL OCCUR</b> (includes food scraps and yard trim) <b>No scheduled bulky trash pickups for white goods, appliances, or scrap tires on Monday, January 2.</b> <small>Las colecciones de materiales orgánicos (incluye desperdicios de comida y podas de jardín) se efectuarán el día festivo. No se efectuarán recolecciones de basura voluminosa para electrodomésticos, aparatos blancos, o neumáticos el lunes 2 de enero.</small>	 <b>NO CHANGE TO CURBSIDE BULKY, RECYCLING, AND TRASH COLLECTION</b> No habrá cambios a los servicios de recolección en la acera de basura voluminosa, reciclaje y basura regular.			

For more information on the holiday schedule changes, please contact PGC311  
 Para obtener más información sobre los cambios por el día festivo, comuníquese con PGC311





# What is ?

# CLEAR

the

# CURB



Did you know Prince George's County has five curbside waste collection services under its Clear the Curb collection programs that modernize and streamline services to the more than 180,000 households? For residents receiving County services, these programs include regular trash, recycling, and yard trim collection, along with the expansion of curbside food scrap composting and the new, improved bulky trash collection!

## MONDAY COLLECTIONS

NEW!



### CURBSIDE COMPOSTING

Starting in fall 2022, eligible residents will get one wheeled green cart and kitchen pail for composting food scraps and yard trim and a welcome kit with educational materials to help prepare compost materials for pickup on Mondays only. Residents participating in the program help protect our environment, cut down on greenhouse emissions, keep valuable materials out of our landfill, and strengthen our local economy. Food items collected and composted with yard trim produce a nutrient-rich soil amendment called Leafgro Gold.®



### YARD TRIM COLLECTION

Yard trim is collected year-round on Monday only and includes grass clippings, leaves, small branches, brush, Christmas trees, and now, food scraps. Place yard trim in paper bags or a personal container marked for collection. If you sign up for the new Curbside Food Scraps Collection, you'll be able to add yard trim to your food scraps container. \*NO plastic bags\*

NEW!



### BULKY TRASH

Starting in winter 2022, residents receiving County-collected trash and recycling collection can now put up to two (2) bulky items or two (2) tightly secured bags of smaller household items, NEXT to their trash containers for pickup. Items such as refrigerators, air conditioners and tires still need to be scheduled for collection through PGC311. This improved collection of bulky items cuts down on wait times and eliminates the temptation to dump illegally.

## YOUR REGULAR COLLECTION DAY



### REGULAR TRASH

Weekly regular trash collection is provided to residential single-family homes and townhomes, eligible to receive County-contracted services. Trash is collected curbside between the hours of 6 a.m. to 8 p.m.



### RESIDENTIAL RECYCLING

Weekly single-stream residential collection allows residents to place all of their acceptable recycling materials loosely in one container without having to sort or separate. It's that easy! When you recycle more, you trash less, helping to keep valuable items out of the Landfill, reduce greenhouse emissions and protect the environment.

### Other self-service and drop-off residential waste services, and commercial/business collection programs offered by the County include:

- Brown Station Road Sanitary Landfill
- Household Hazardous Waste Acceptance Site
- Electronics Recycling Acceptance Site
- Scrap tire and Appliance Disposal
- Brown Station Road Drop-off Convenience Center
- Materials Recycling Facility
- Organics Composting Facility
- Missouri Avenue Drop-off Solid Waste Acceptance and Recycling Center

Want more information about YOUR County's Clear the Curb Waste Collection Programs? Visit [mypgc.us/clearthecurb](https://mypgc.us/clearthecurb) for more details or contact PGC311.

Let's Clear the Curb to help keep Prince George's County clean, healthy, and sustainable.

Announcing the expanded  
**Curbside  
Composting  
program!**



DYK...Prince George's County has expanded its free Curbside Composting Program!

- Eligible residents using County trash and recycling collection services have started receiving their materials this fall.
- Eligible residents not receiving materials this year will receive them in the next rollout scheduled for 2023.



- Eligible residents participating in the Curbside Composting program receive a Welcome Packet that includes a magnet listing accepted materials.
- These natural materials, like food scraps, yard trim, paper and cardboard, and more, are used to create an organic soil supplement called LeafGro Gold®.

# WHAT CAN I COMPOST?

¿Qué se Puede Compostar?



<p><b>Yard Trim</b> Recortes de Jardín</p>	<p><b>Fruits and Vegetables</b> Frutas y Vegetales</p>	<p><b>Paper Towels and Napkins</b> Toallitas de Papel y Servilletas</p>
<p><b>Bread, Pasta and Grains</b> Pan, Pasta y Granos</p>	<p><b>Meat and Bones</b> Carne y Huesos</p>	<p><b>Paper Ice Cream Containers</b> Contenedor de Helado de Papel</p>
<p><b>Dairy Products</b> Productos Lácteos</p>	<p><b>Seafood and Shellfish</b> Pescados y Mariscos</p>	<p><b>Pizza Boxes</b> Cajas de Pizza</p>
<p><b>COMPOST THESE</b> Esto se Composta</p> 	<p><b>Uncoated Paper Plates and Bags</b> Bolsas y Platos de Papel Sin Recubrimiento</p>	<p><b>Coffee Grounds and Filters</b> Granos de Café y Filtros</p>
	<p><b>Eggs and Egg Shells</b> Huevos y Cáscaras de Huevo</p>	<p><b>Leftovers</b> Restos de Comida</p>
	<p><b>Tea Bags and Loose Tea</b> Bolsas de Té y Té a Granel</p>	<p><b>Food-soiled Paper</b> Papel Sucio con Restos de Comida</p>

**COMPOSTING IS AS EASY AS 1-2-3:**

- 1 Put your kitchen pail in a convenient location
- 2 Empty contents of pail into green cart
- 3 Put green cart curbside by 6 a.m. Monday

[mypgc.us/compost](http://mypgc.us/compost)





**PGC COMPOSTS**  
**EVERY MEAL**  
**EVERY**  
**SCRAP**  
**EVERY MONDAY**







# INCLEMENT WEATHER UPDATES

- During inclement weather, residents are advised that bulky trash, trash, recycling, and yard trim/organics collections may be delayed or suspended due to road or weather-related conditions. In addition, all waste collection facilities and services may be impacted.
- In all cases, residents are reminded to adhere to their current HOA or civic association rules and regulations regarding trash and recycling placed in public areas.
- The County will make every effort to post any information regarding delayed or suspended collections on the County's website at [mypgc.us](http://mypgc.us), or DoE's website at [environment.mypgc.us](http://environment.mypgc.us), or you may contact [PGC311](tel:PGC311).
- Remember that all collections can occur anytime from **6 AM to 8 PM**.





## 1 Day of Inclement Weather

In the event of a one-day inclement weather event causing suspension of trash and recycling collection services, **all services will shift by one day through the end of the week.**

**YOUR RECYCLING  
AND TRASH  
COLLECTION DAY**



**COLLECTION  
SUSPENDED**



**THE NEXT DAY**

All regularly scheduled  
collections shift by one  
day that week



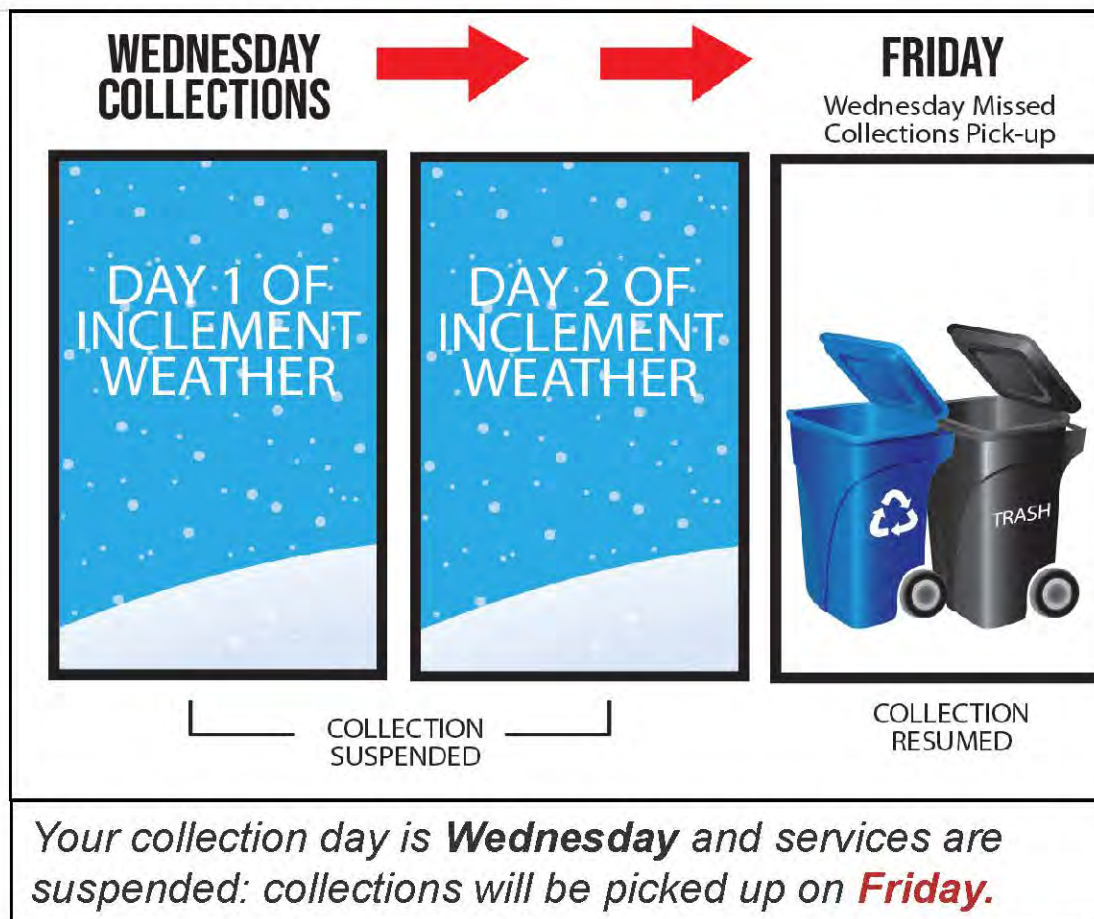
**COLLECTION  
RESUMED**

*For example, if services are suspended on a Tuesday, those collections will be picked up on Wednesday, Wednesday collections will be picked up on Thursday, Thursday collections will be picked up on Friday, and Friday will be picked up on Saturday.*



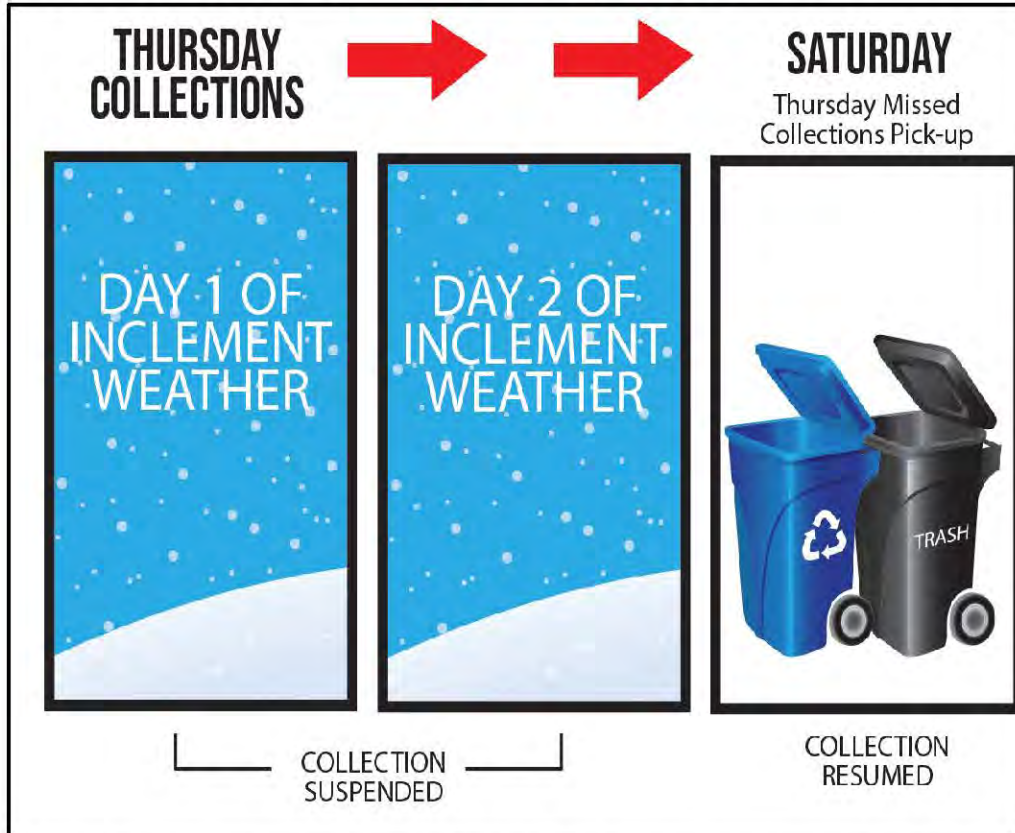
## 2 Days of Inclement Weather

If trash and recycling collections need to be suspended for **two consecutive days** due to inclement weather, the collection schedule will be as follows:

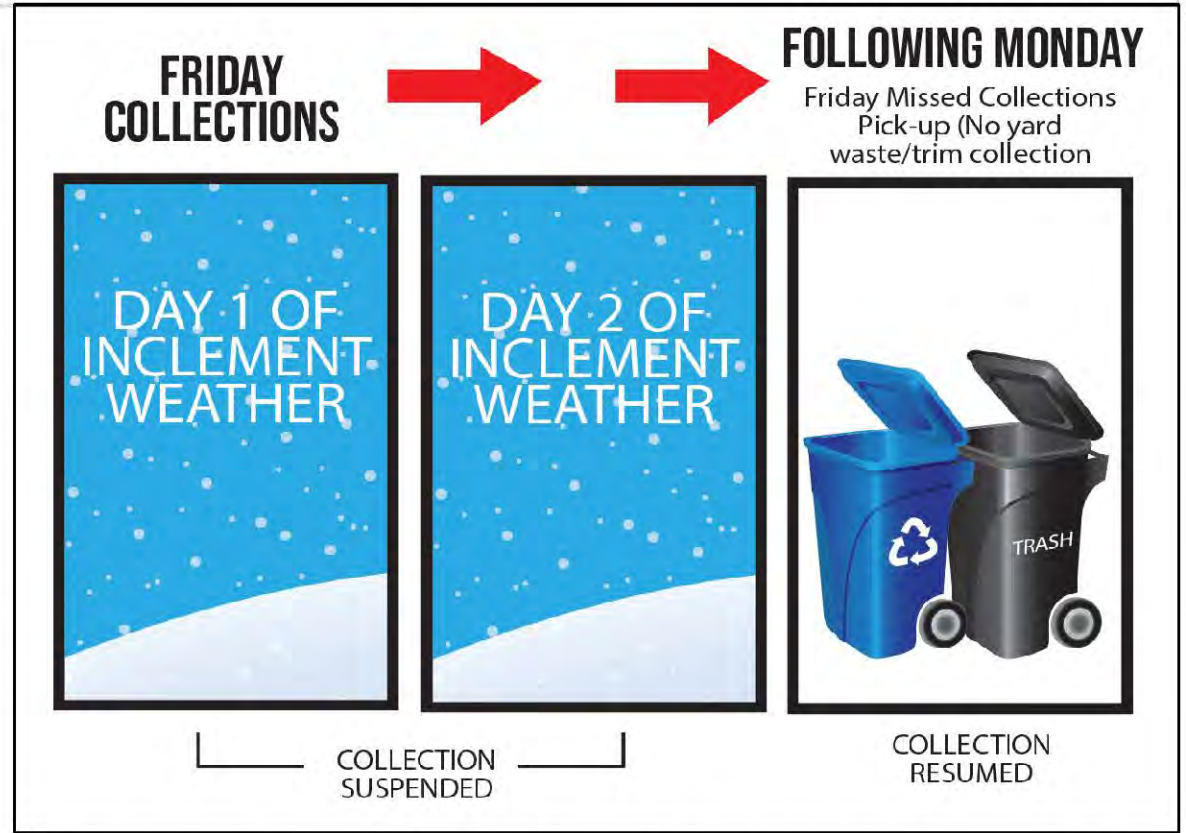


## 2 Days of Inclement Weather

If trash and recycling collections need to be suspended for **two consecutive days** due to inclement weather, the collection schedule will be as follows:



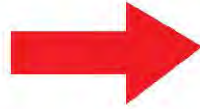
Your collection day is **Thursday** and services are suspended: collections will be picked up on **Saturday**.



Your collection day is **Friday** and services are suspended: collections will be picked up on the **following Monday**.  
**\*\*Yard trim and composting services will be suspended Monday if collecting missed Friday\*\*.**



**MONDAY  
YARD TRIM  
COLLECTION**



**THE NEXT  
MONDAY**



**COLLECTION  
SUSPENDED**



**COLLECTION  
RESUMED**

**YARD TRIM**

Monday yard trim/waste collections suspended due to severe weather will be collected on the following Monday.

**BULKY TRASH**

Bulky trash collections suspended due to severe weather will be collected within seven (7) days.

Residents will be contacted with a new collection date within that timeframe.

Remember that all collections can occur anytime from **6 a.m. to 8 p.m.**



# RECYCLE your CHRISTMAS TREE



The Prince George's County Department of the Environment is making it easy for residents to recycle cut Christmas trees (no artificial trees) by offering a convenient drop-off location and curbside pick up.



**Due to the Christmas holiday, yard trim and Christmas Tree collection will run from January 2, 2023 to January 30, 2023.** Residents with Yard Trim Collection may place their undecorated, unbagged, live Christmas trees at the curb by 6 a.m. on their regularly scheduled yard trim collection day.

**BROWN STATION ROAD PUBLIC CONTAINER PAD & RECYCLING CENTER**  
3501 Brown Station Road  
Upper Marlboro, Maryland 20772  
**Mon. – Sat.:** 7 a.m. – 6 p.m.  
**Sun.:** CLOSED

For more information, please call PGC311

*\*Please remove all plastic bags, tinsel and decorations. No artificial trees.*



**SOURCE REDUCTION TIP:**  
Save bows, paper and boxes for future gift wrapping!





# HAPPY HOLIDAYS

from YOUR Department of the Environment



# CONTACT US



Office of  
Communications and  
Public Engagement  
Linda Lowe, PIO  
[lm Lowe@co.pg.md.us](mailto:lm Lowe@co.pg.md.us)  
301-836-2115





Angela D. Alsobrooks  
*County Executive*



Michael D. Johnson, P.E.  
*Director*

# PGC 311 Presentation

**Presented by Jennifer Hawkins  
Office of Community Relations**

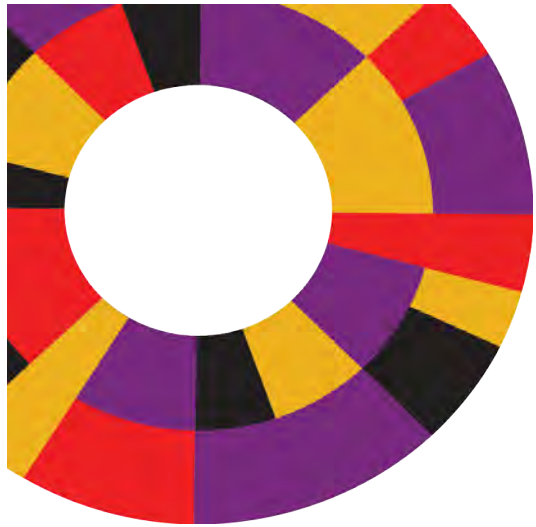




# WELCOME

Euniesha Davis, Director  
**Office of Community  
Relations**

The Office of Community Relations ensures that County residents connect with government resources, agencies, and personnel. Our responsibility is to serve as a bridge between the government and its people.



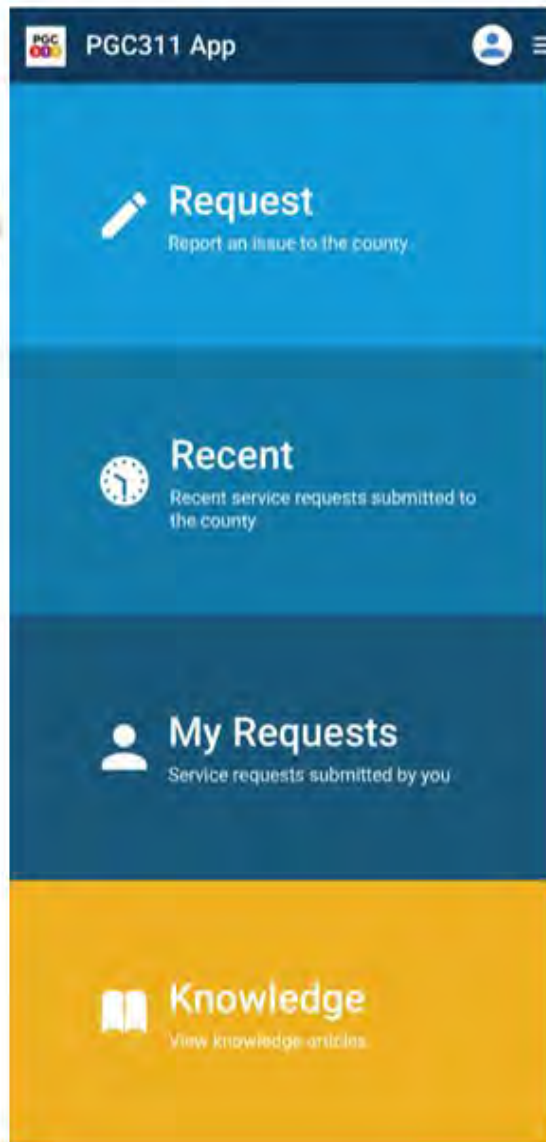
# You Now Have Options

## PGC311 Mobile App and Web Portal

- The new PGC311 mobile app and web portal, [www.PGC311.com](http://www.PGC311.com), are as easy and helpful as a call to the 311 Call Center and are available 24 hours a day 7 days a week!

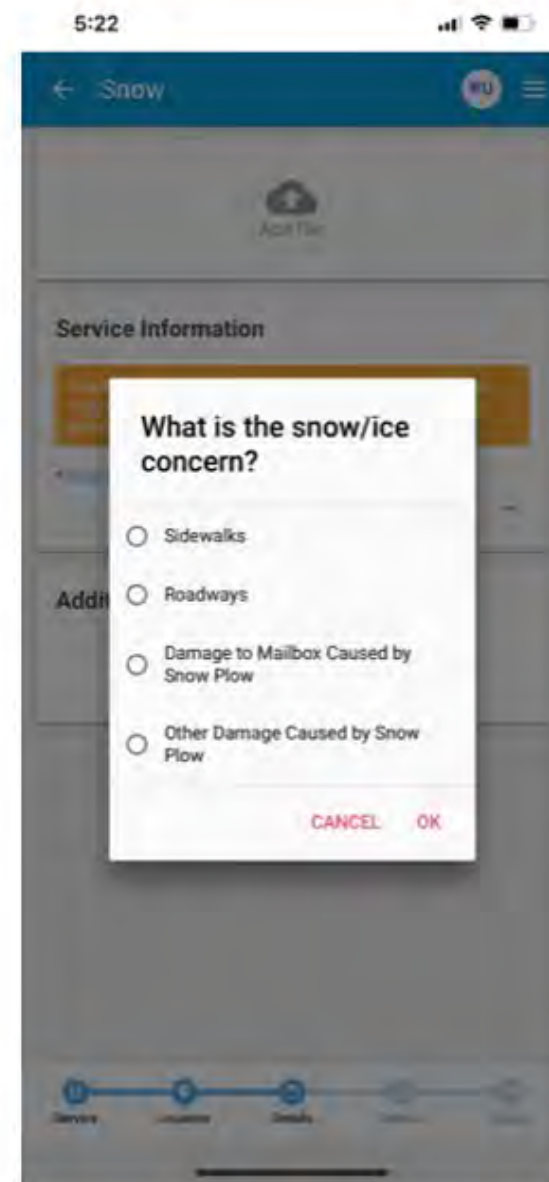
## PGC311 Call Center

- The PGC311 Call Center is ready to assist during normal business hours.
  - Dial 3-1-1 or 301-883-4748
  - Monday through Friday,
  - 7 AM to 7 PM

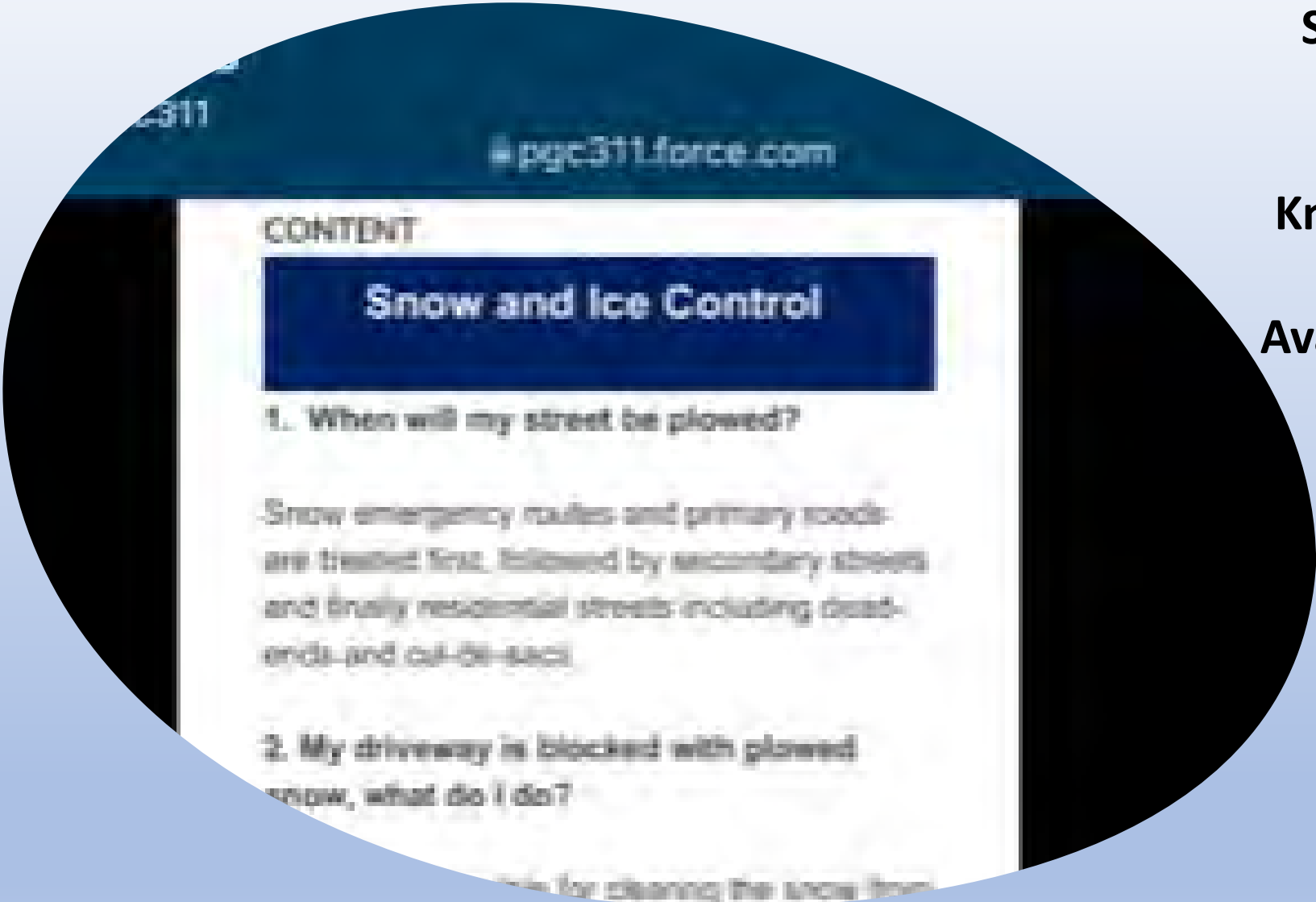


**Step 1:** Click the Request tile to select your Snow Concern Option

**Step 2:** Select the option that reflects your snow concern  
**Sidewalks**  
**Roadways**  
**Damage to Mailbox**  
**Other Damage.....**



**Snow-Related  
FAQs  
&  
Knowledge Base  
Articles  
Available for your  
Information**





- **We want your feedback!**
- **Share your experience with using PGC311.**
- **You too can be a part of continuous improvement.**

**Complete the customer and agency services SURVEY today!**





**Very Important!**

**Please Wait 48 hours until  
snowfall ends before  
submitting a request for  
snow removal services.**



*Thank You!*

**Jennifer Hawkins**

**311onthego@co.pg.md.us**

**301-952-4729**

 **@pgc\_communityrelations**

 **@PGCCCommunity**





## 1. What is the Department's responsibility for enforcing commercial trucks and trailers parked in the neighborhood for months?

My wife and I have been submitting Prince George's County (PGC) code violations to 311 and County officials numerous times without a response. The renters at 6404 9th Avenue are cluttering streets (9th and Thurman Avenues) with commercial trucks and trailers containing trash, building supplies, boards, debris, etc. which has created a rodent problem in the neighborhood and the community. We have additional pictures, however, we want to make sure they are being sent to the correct Department. Violation pictures attached. This was once a beautiful neighborhood which has now become an eye sore.

**ANSWER:** Commercial vehicles parked on the street should be reported to 311 along with the Revenue Authority and the police department. They have responsibility for enforcement of parking issues on the street. Commercial vehicles parked on private property should be reported to 311. DPIE's area inspectors will, upon receiving the commercial vehicle complaint, investigate to verify and document the unpermitted activity. They will issue violation notices and citations as appropriate.

## 2. What is the Department responsible for dealing with "over-crowding"?

There are too many people living in 6404 9th Avenue (single family home). This is contributing to unsanitary conditions.

**ANSWER:** Documenting and proving "overcrowding" is difficult. The owner and/or occupants do not have to allow access to their home to document possible overcrowding, renting home and rooms out without a rental license or short term rental license. The overcrowding concern should be reported to 311 so that the DPIE inspector can begin their investigation and try to gain access and help educate the occupants that if there is unpermitted activity, they will need to obtain a license from the County. Once they make application, there will need to be an inspection of the property and home in order to issue the rental license. Sometimes the owners of the property of concern is able to advise that they have their family members living with them.





### 3. What is being done regarding the quality of maintaining county properties?

The contractors hired by the county perform substandard work. They leave grass clippings and don't blow away debris, don't clean the sidewalks after the work is done and have no schedule to cut grass. The conditions of our county roads are deplorable. Prince Georges residents pay the highest taxes in the state of Maryland and with the excessive cost of living in Prince Georges, we should expect a least satisfactory services, which is not the case.

**ANSWER:** The Prince George's County Office of Central Services is the agency responsible for maintaining County owned properties. The DPW&T provides mowing and plant-bed maintenance services in the public right-of-way on primary County roadways. The contract-maintained areas are serviced once every 2-3 weeks. The contractor's completed work is inspected for acceptance on daily basis. Please provide any site-specific areas or street locations of concern.

### 4. What is the County's policy for cutting down trees that are obstructing sidewalks?

I have requested on several occasions to have a county tree cut down. The roots have grown so much, it has destroyed the sidewalk, which is a safety hazard.

**ANSWER:** The DPW&T operates under a blanket roadside tree permit issued by the Maryland Department of Natural Resources to perform roadside tree maintenance for trees located in the public right-of-way. This permits provides certain criteria and regulations for dead tree removals, tree trimming, and planting of new trees in the public right-of-way. The DPW&T's trimming standards for street trees is to elevate the trees (8) feet over the sidewalk, (10) feet over the curb, and (14) feet over center of the roadway. The DPW&T's Subdivision Tree Trimming program provides for trimming of roadside trees in residential communities on a wide scale basis. Any address specific service request for tree trimming may be submitted through PGC 311.

Please submit a service request for sidewalk repair of the tripping hazard. Tree root maintenance is the responsibility of the property owner.



Angela D. Alsobrooks  
County Executive

# Q&A



Michael D. Johnson, P.E.  
Director

5. Since the updates, reconstruction, etc. to Walker Mill Regional Park North have been put on hold AGAIN can we at least provide residents in the area a continuous sidewalk?

This might let speeders know that when you cross Ritchie Road to Walker Mill Road you are entering a large and continuous community (single family homes, townhomes, condos, apartments and a school) not a speedway. I would be available at your convenience to walk this area with you if you are not familiar.

**ANSWER:** Walker Mill Road has existing sidewalk between Ryon Way and the Walker Mill Regional Park on one the side. The area on both sides of Walker Mill Road between the park and Ritchie Road undeveloped lots slated for possible future development (MNCPPC Project, etc) when as a part of the required frontage improvement sidewalk can be extended beyond the existing points.

Also, as a part of an upcoming new development on Karen Boulevard that would connect Central Avenue ( MD 214 and Walker Mill Road), new bike lanes connecting to the exiting bike lane along Walker Mill Road will be considered. Also, as a part of the off-site development, we are looking into extending the sidewalk along this stretch where we have available right-of-way.

In our effort to reduce speed along Walker Mill Road, please note that additional features like Rectangular Flashing Beacon at John Wayne Elementary School has been designed and will be implemented. While there are there are several signals along this roadway, that provide gaps in the traffic stream, additional Speed Limit signs will be added. This roadway can also be considered for possible Speed Camera (Police Program). A field meeting with DPW&T staff is appreciated and will be scheduled with the citizen to further look into the development plan in this area in terms of enhancing pedestrian safety.



Angela D. Alsobrooks  
County Executive

# Thank you!



Michael D. Johnson, P.E.  
Director

